

Product datasheet for **TA346426**

Cytokeratin 1 (KRT1) Rabbit Polyclonal Antibody

Product data:

Product Type:	Primary Antibodies
Applications:	IHC, WB
Recommended Dilution:	WB, IHC
Reactivity:	Human
Host:	Rabbit
Isotype:	IgG
Clonality:	Polyclonal
Immunogen:	The immunogen for anti-KRT1 antibody: synthetic peptide directed towards the middle region of human KRT1. Synthetic peptide located within the following region: GSYSGSSSSGGYRGGSGGGGGSSGGRGSGGGSSGGSIGGRGSSSSGGVKS
Formulation:	Liquid. Purified antibody supplied in 1x PBS buffer with 0.09% (w/v) sodium azide and 2% sucrose. <i>Note that this product is shipped as lyophilized powder to China customers.</i>
Purification:	Affinity Purified
Conjugation:	Unconjugated
Storage:	Store at -20°C as received.
Stability:	Stable for 12 months from date of receipt.
Predicted Protein Size:	66 kDa
Gene Name:	keratin 1
Database Link:	NP_006112 Entrez Gene 3848 Human P04264



[View online »](#)

Background:

KRT1 is a member of the keratin gene family. The type II cytokeratins consist of basic or neutral proteins which are arranged in pairs of heterotypic keratin chains coexpressed during differentiation of simple and stratified epithelial tissues. This type II cytokeratin is specifically expressed in the spinous and granular layers of the epidermis with family member KRT10 and mutations in these genes have been associated with bullous congenital ichthyosiform erythroderma. The protein encoded by this gene is a member of the keratin gene family. The type II cytokeratins consist of basic or neutral proteins which are arranged in pairs of heterotypic keratin chains coexpressed during differentiation of simple and stratified epithelial tissues. This type II cytokeratin is specifically expressed in the spinous and granular layers of the epidermis with family member KRT10 and mutations in these genes have been associated with bullous congenital ichthyosiform erythroderma. The type II cytokeratins are clustered in a region of chromosome 12q12-q13. Publication Note: This RefSeq record includes a subset of the publications that are available for this gene. Please see the Entrez Gene record to access additional publications.

Synonyms:

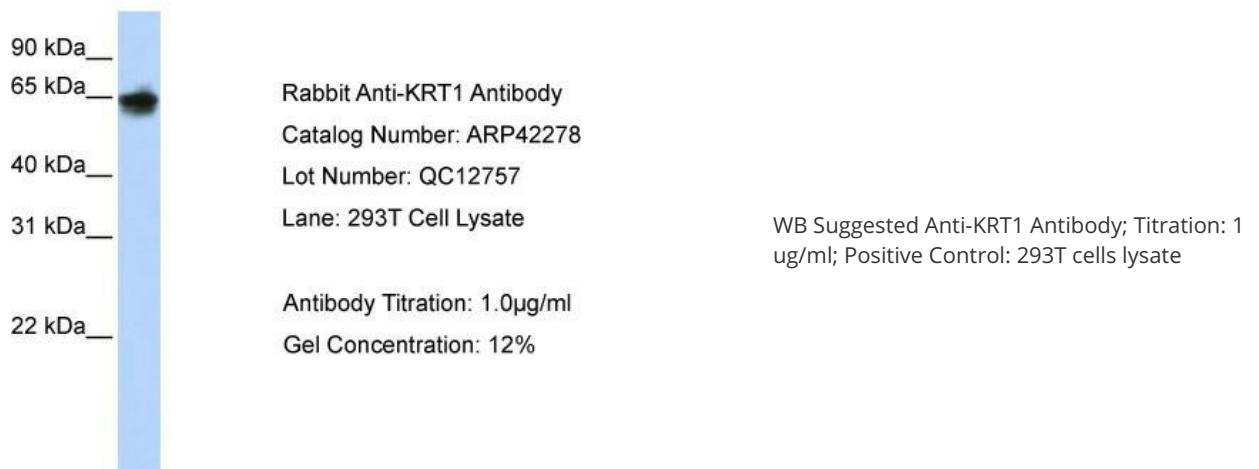
CK1; EHK; EHK1; EPPK; K1; KRT1A; NEPPK

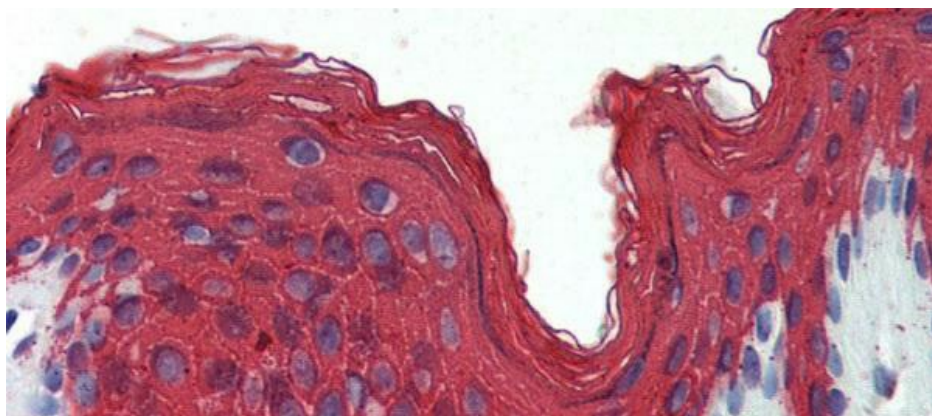
Note:

Immunogen Sequence Homology: Human: 100%; Rat: 93%; Rabbit: 93%; Dog: 86%

Protein Families:

Druggable Genome

Product images:




Rabbit Anti-KRT1 Antibody; Paraffin Embedded Tissue: Human Skin; Antibody Concentration: 1.25-2.5 ug/ml