

Product datasheet for TA346425

MYH10 Rabbit Polyclonal Antibody

Product data:

Product Type:	Primary Antibodies
Applications:	WB
Recommended Dilution:	WB
Reactivity:	Human
Host:	Rabbit
Isotype:	IgG
Clonality:	Polyclonal
Immunogen:	The immunogen for anti-MYH10 antibody: synthetic peptide directed towards the N terminal of human MYH10. Synthetic peptide located within the following region: WFPKATDKTFVEKLVQEQGSHSKFQKPRQLKDKADFCIIHYAGKVDYKAD
Formulation:	Liquid. Purified antibody supplied in 1x PBS buffer with 0.09% (w/v) sodium azide and 2% sucrose. <i>Note that this product is shipped as lyophilized powder to China customers.</i>
Purification:	Affinity Purified
Conjugation:	Unconjugated
Storage:	Store at -20°C as received.
Stability:	Stable for 12 months from date of receipt.
Predicted Protein Size:	229 kDa
Gene Name:	myosin, heavy chain 10, non-muscle
Database Link:	NP_005955 Entrez Gene 4628 Human P35580
Background:	MYH10 is the cellular myosin that appears to play a role in cytokinesis, cell shape, and specialized functions such as secretion and capping.
Synonyms:	NMMHC-IIB; NMMHCB
Note:	Immunogen Sequence Homology: Dog: 100%; Pig: 100%; Rat: 100%; Horse: 100%; Human: 100%; Mouse: 100%; Bovine: 100%; Rabbit: 100%; Guinea pig: 100%; Zebrafish: 86%

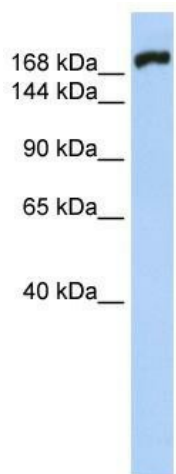


[View online »](#)

Protein Families: Druggable Genome

Protein Pathways: Regulation of actin cytoskeleton, Tight junction, Viral myocarditis

Product images:



WB Suggested Anti-MYH10 Antibody Titration:
0.2-1 ug/ml; ELISA Titer: 1: 1562500; Positive
Control: Human Lung