

Product datasheet for **TA346424**

Myosin Heavy chain 1 (MYH1) Rabbit Polyclonal Antibody

Product data:

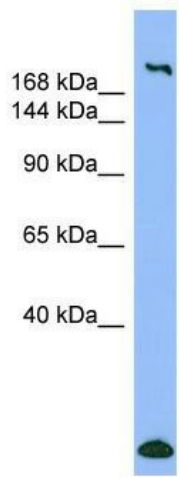
Product Type:	Primary Antibodies
Applications:	WB
Recommended Dilution:	WB
Reactivity:	Human
Host:	Rabbit
Isotype:	IgG
Clonality:	Polyclonal
Immunogen:	The immunogen for anti-MYH1 antibody: synthetic peptide directed towards the N terminal of human MYH1. Synthetic peptide located within the following region: KTSVFWDPKESFVKATVQSREGGKVTAKTEAGATVTVKDDQVFPMPNPPK
Formulation:	Liquid. Purified antibody supplied in 1x PBS buffer with 0.09% (w/v) sodium azide and 2% sucrose. <i>Note that this product is shipped as lyophilized powder to China customers.</i>
Purification:	Affinity Purified
Conjugation:	Unconjugated
Storage:	Store at -20°C as received.
Stability:	Stable for 12 months from date of receipt.
Predicted Protein Size:	223 kDa
Gene Name:	myosin, heavy chain 1, skeletal muscle, adult
Database Link:	NP_005954 Entrez Gene 4619 Human P12882
Background:	Myosin is a major contractile protein which converts chemical energy into mechanical energy through the hydrolysis of ATP. Myosin is a hexameric protein composed of a pair of myosin heavy chains (MYH) and two pairs of nonidentical light chains. Myosin hea
Synonyms:	D; HEL71; MYHa; MyHC-2X; MyHC-2x; MYHSA1
Note:	Immunogen Sequence Homology: Pig: 100%; Rat: 100%; Horse: 100%; Human: 100%; Mouse: 100%; Sheep: 100%; Bovine: 100%; Rabbit: 100%; Guinea pig: 100%; Dog: 93%; Zebrafish: 85%



[View online »](#)

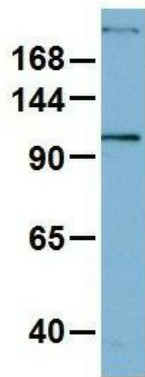
Protein Pathways: Tight junction, Viral myocarditis

Product images:



WB Suggested Anti-MYH1 Antibody Titration: 0.2-1 ug/ml; ELISA Titer: 1: 62500; Positive Control: COLO205 cell lysate

MYH1



Rabbit Anti-MYH1
 Sample Type: Human OVCAR-3
 Antibody Concentration: 1ug/mL

Host: Rabbit; Target Name: MYH1; Sample Tissue: OVCAR-3; Antibody Dilution: 1.0 ug/ml; MYH1 is supported by BioGPS gene expression data to be expressed in OVCAR3