

Product datasheet for **TA346423**

MAK Rabbit Polyclonal Antibody

Product data:

Product Type:	Primary Antibodies
Applications:	IHC, WB
Recommended Dilution:	WB, IHC
Reactivity:	Human
Host:	Rabbit
Isotype:	IgG
Clonality:	Polyclonal
Immunogen:	The immunogen for anti-MAK antibody: synthetic peptide directed towards the C terminal of human MAK. Synthetic peptide located within the following region: WNTKTGRGQFSGRTYNPTAKNLNIVNRAQPIPSVHGRTDWWAKYGGHR
Formulation:	Liquid. Purified antibody supplied in 1x PBS buffer with 0.09% (w/v) sodium azide and 2% sucrose. <i>Note that this product is shipped as lyophilized powder to China customers.</i>
Purification:	Affinity Purified
Conjugation:	Unconjugated
Storage:	Store at -20°C as received.
Stability:	Stable for 12 months from date of receipt.
Predicted Protein Size:	70 kDa
Gene Name:	male germ cell associated kinase
Database Link:	NP_005897 Entrez Gene 4117 Human P20794



[View online »](#)

Background:

MAK is a serine/threonine protein kinase related to kinases involved in cell cycle regulation. It is expressed almost exclusively in the testis, primarily in germ cells. Studies of the mouse and rat homologs have localized the kinase to the chromosomes during meiosis in spermatogenesis, specifically to the synaptonemal complex that exists while homologous chromosomes are paired. There is, however, a study of the mouse homolog that has identified high levels of expression in developing sensory epithelia so its function may be more generalized. The product of this gene is a serine/threonine protein kinase related to kinases involved in cell cycle regulation. It is expressed almost exclusively in the testis, primarily in germ cells. Studies of the mouse and rat homologs have localized the kinase to the chromosomes during meiosis in spermatogenesis, specifically to the synaptonemal complex that exists while homologous chromosomes are paired. There is, however, a study of the mouse homolog that has identified high levels of expression in developing sensory epithelia so its function may be more generalized.

Synonyms:

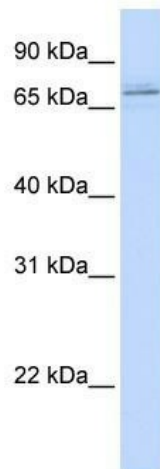
dj417M14.2; RP62

Note:

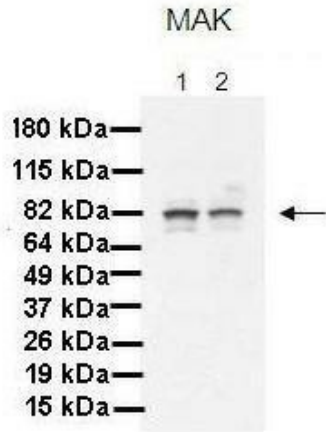
Immunogen Sequence Homology: Rat: 100%; Human: 100%; Mouse: 100%; Dog: 93%; Pig: 93%; Horse: 93%; Bovine: 93%; Rabbit: 86%

Protein Families:

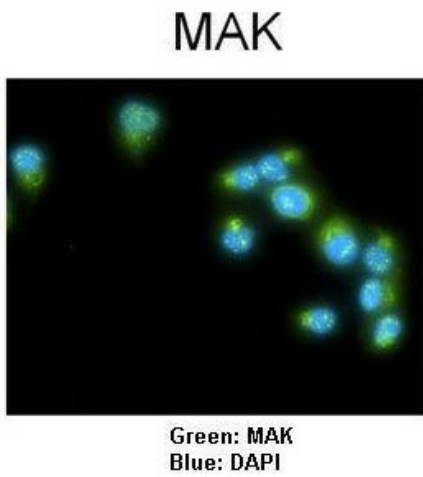
Druggable Genome, Protein Kinase

Product images:

WB Suggested Anti-MAK Antibody Titration: 0.2-1 ug/ml; ELISA Titer: 1: 312500; Positive Control: Hela cell lysate



Lanes: 1. 30 ug MiaPaca-2 cell lysate; 2. 30 ug Panc-1 cell lysate; Primary Antibody Dilution: 1: 1000; Secondary Antibody: Goat anti-Rabbit HRP; Secondary Antibody Dilution: 1: 4000; Gene Name: MAK; Submitted by: Dr. Crissy Dudgeon, Ph.D., CINJ;



Sample Type: Human lung adenocarcinoma cell line A549 Primary Antibody Dilution: 1: 100; Secondary Antibody: Goat anti-rabbit AlexaFluor 488; Secondary Antibody dilution: 1: 400; Color/Signal Descriptions: MAK: Green DAPI: Blue; Gene Name: MAK Submitted by: Dr. Crissy Dudgeon, Ph.D., CINJ