

Product datasheet for **TA346421**

CTDSPL Rabbit Polyclonal Antibody

Product data:

Product Type:	Primary Antibodies
Applications:	IHC, WB
Recommended Dilution:	WB, IHC
Reactivity:	Human
Host:	Rabbit
Isotype:	IgG
Clonality:	Polyclonal
Immunogen:	The immunogen for anti-CTDSPL antibody: synthetic peptide directed towards the N terminal of human CTDSPL. Synthetic peptide located within the following region: CCFRDYNVEAPPPSSPSVLPLLVEENGGLQKPPAKYLLPEVTVLDYGKKC
Formulation:	Liquid. Purified antibody supplied in 1x PBS buffer with 0.09% (w/v) sodium azide and 2% sucrose. <i>Note that this product is shipped as lyophilized powder to China customers.</i>
Purification:	Affinity Purified
Conjugation:	Unconjugated
Storage:	Store at -20°C as received.
Stability:	Stable for 12 months from date of receipt.
Predicted Protein Size:	30 kDa
Gene Name:	CTD small phosphatase like
Database Link:	NP_005799 Entrez Gene 10217 Human O15194
Background:	CTDSPL may function as a phosphatase involved in the regulation of cell growth and differentiation.
Synonyms:	C3orf8; HYA22; PSR1; RBSP3; SCP3
Note:	Immunogen Sequence Homology: Pig: 100%; Rat: 100%; Human: 100%; Mouse: 100%; Zebrafish: 90%



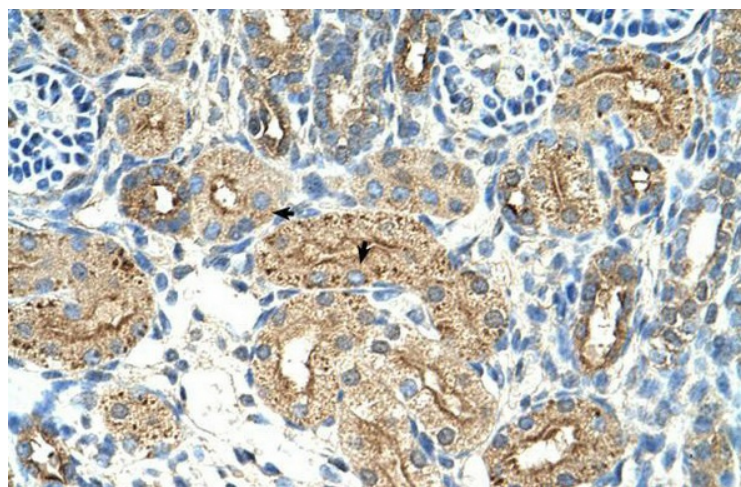
[View online »](#)

Protein Families: Druggable Genome, Phosphatase

Product images:



WB Suggested Anti-CTDSPL Antibody Titration: 0.2-1 ug/ml; Positive Control: DLD1 cell lysate; CTDSPL is strongly supported by BioGPS gene expression data to be expressed in Human DLD1 cells



Rabbit Anti-CTDSPL Antibody; Paraffin Embedded Tissue: Human Kidney; Cellular Data: Epithelial cells of renal tubule; Antibody Concentration: 4.0-8.0 ug/ml; Magnification: 400X