

Product datasheet for **TA346418**

DHRS2 Rabbit Polyclonal Antibody

Product data:

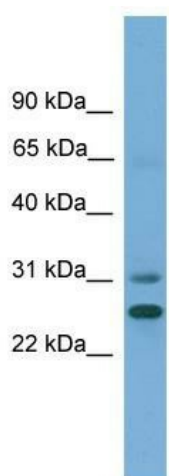
Product Type:	Primary Antibodies
Applications:	WB
Recommended Dilution:	WB
Reactivity:	Human
Host:	Rabbit
Isotype:	IgG
Clonality:	Polyclonal
Immunogen:	The immunogen for anti-DHRS2 antibody: synthetic peptide directed towards the N terminal of human DHRS2. Synthetic peptide located within the following region: GIDRKGVLANRVAVVTGSTSGIGFAIARRLARDGAHWISSRKQQNVDR
Formulation:	Liquid. Purified antibody supplied in 1x PBS buffer with 0.09% (w/v) sodium azide and 2% sucrose. <i>Note that this product is shipped as lyophilized powder to China customers.</i>
Purification:	Affinity Purified
Conjugation:	Unconjugated
Storage:	Store at -20°C as received.
Stability:	Stable for 12 months from date of receipt.
Predicted Protein Size:	30 kDa
Gene Name:	dehydrogenase/reductase 2
Database Link:	NP_005785 Entrez Gene 10202 Human Q13268
Background:	Hep27, a cell-cycle regulated protein, belongs to the SDR family (short-chain dehydrogenase/reductase family). Hep27 is a NADPH-dependent dicarbonyl reductase enzyme active on xenobiotics.
Synonyms:	HEP27; SDR25C1
Note:	Immunogen Sequence Homology: Human: 100%; Dog: 93%; Rat: 93%; Horse: 93%; Mouse: 93%; Bovine: 86%; Rabbit: 86%; Yeast: 85%



[View online »](#)

Protein Families: Druggable Genome

Product images:



WB Suggested Anti-DHRS2 Antibody Titration: 0.2-1 ug/ml; ELISA Titer: 1: 12500; Positive Control: HT1080 cell lysate; DHRS2 is strongly supported by BioGPS gene expression data to be expressed in Human HT1080 cells