

Product datasheet for **TA346417**

Visfatin (NAMPT) Rabbit Polyclonal Antibody

Product data:

Product Type:	Primary Antibodies
Applications:	IHC, WB
Recommended Dilution:	WB, IHC
Reactivity:	Human
Host:	Rabbit
Isotype:	IgG
Clonality:	Polyclonal
Immunogen:	The immunogen for anti-PBEF1 antibody: synthetic peptide directed towards the C terminal of human PBEF1. Synthetic peptide located within the following region: VTLEEGKGDLEEYGGDLLHTVFKNGKVTKSYSFDEIRKNAQLNIELEAAH
Formulation:	Liquid. Purified antibody supplied in 1x PBS buffer with 0.09% (w/v) sodium azide and 2% sucrose. <i>Note that this product is shipped as lyophilized powder to China customers.</i>
Purification:	Protein A Purified
Conjugation:	Unconjugated
Storage:	Store at -20°C as received.
Stability:	Stable for 12 months from date of receipt.
Predicted Protein Size:	54 kDa
Gene Name:	nicotinamide phosphoribosyltransferase
Database Link:	NP_005737 Entrez Gene 10135 Human P43490



[View online »](#)

Background: PBEF1 catalyzes the condensation of nicotinamide with 5-phosphoribosyl-1-pyrophosphate to yield nicotinamide mononucleotide, one step in the biosynthesis of nicotinamide adenine dinucleotide. The protein is an adipokine that is localized to the bloodstream and has various functions, including the promotion of vascular smooth muscle cell maturation and inhibition of neutrophil apoptosis. It also activates insulin receptor and has insulin-mimetic effects, lowering blood glucose and improving insulin sensitivity. The protein is highly expressed in visceral fat and serum levels of the protein correlate with obesity.

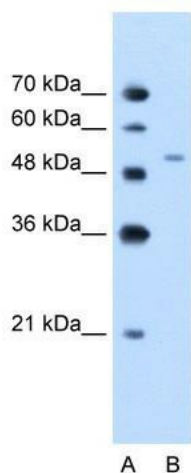
Synonyms: 1110035O14Rik; PBEF; PBEF1; VF; VISFATIN

Note: Immunogen Sequence Homology: Pig: 100%; Rat: 100%; Human: 100%; Guinea pig: 100%; Dog: 93%; Horse: 93%; Mouse: 93%; Bovine: 93%; Rabbit: 93%; Zebrafish: 93%

Protein Families: Druggable Genome

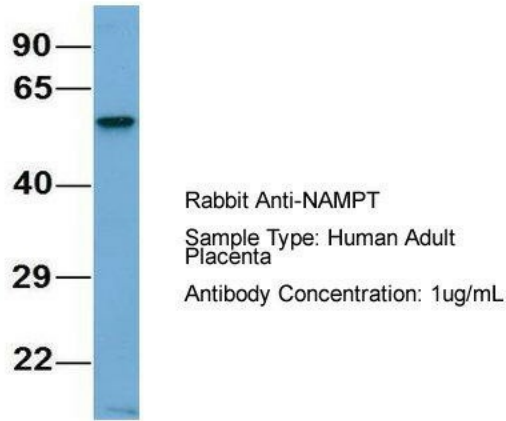
Protein Pathways: Nicotinate and nicotinamide metabolism

Product images:

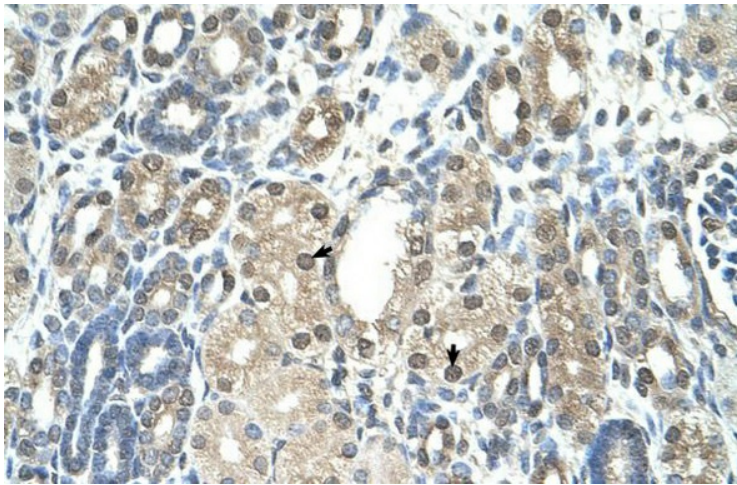


WB Suggested Anti-PBEF1 Antibody Titration:
1.25 ug/ml; Positive Control: Jurkat cell lysate

NAMPT



Hum. Adult Placenta; Host: Rabbit; Target Name: CHAD; Sample Tissue: Human Adult Placenta; Antibody Dilution: 1.0 ug/ml



Rabbit Anti-PBEF1 Antibody; Paraffin Embedded Tissue: Human Kidney; Cellular Data: Epithelial cells of renal tubule; Antibody Concentration: 4.0-8.0 ug/ml; Magnification: 400X