

## Product datasheet for **TA346415**

### ABCB6 Rabbit Polyclonal Antibody

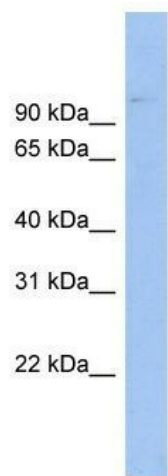
#### Product data:

Product Type:	Primary Antibodies
Applications:	WB
Recommended Dilution:	WB
Reactivity:	Human
Host:	Rabbit
Isotype:	IgG
Clonality:	Polyclonal
Immunogen:	The immunogen for anti-ABCB6 antibody: synthetic peptide directed towards the middle region of human ABCB6. Synthetic peptide located within the following region: VTEWRTKFRRAMNTQENATRARA VDSLNFETVKYYNAESYEVERYREAL
Formulation:	Liquid. Purified antibody supplied in 1x PBS buffer with 0.09% (w/v) sodium azide and 2% sucrose. <i>Note that this product is shipped as lyophilized powder to China customers.</i>
Purification:	Affinity Purified
Conjugation:	Unconjugated
Storage:	Store at -20°C as received.
Stability:	Stable for 12 months from date of receipt.
Predicted Protein Size:	94
Gene Name:	ATP binding cassette subfamily B member 6 (Langereis blood group)
Database Link:	<a href="#">NP_005680</a> <a href="#">Entrez Gene 10058 Human</a> <a href="#">Q9NP58</a>



[View online »](#)

- Background:** The membrane-associated protein encoded by this gene is a member of the superfamily of ATP-binding cassette (ABC) transporters. ABC proteins transport various molecules across extra- and intra-cellular membranes. ABC genes are divided into seven distinct subfamilies (ABC1, MDR/TAP, MRP, ALD, OABP, GCN20, White). This protein is a member of the MDR/TAP subfamily. Members of the MDR/TAP subfamily are involved in multidrug resistance as well as antigen presentation. This half-transporter likely plays a role in mitochondrial function. Localized to 2q26, this gene is considered a candidate gene for lethal neonatal metabolic syndrome, a disorder of mitochondrial function.
- Synonyms:** ABC; ABC14; DUH3; LAN; MCOPCB7; MTABC3; PRP; umat
- Note:** Immunogen Sequence Homology: Dog: 100%; Pig: 100%; Rat: 100%; Horse: 100%; Human: 100%; Mouse: 100%; Rabbit: 100%; Guinea pig: 100%; Goat: 93%; Bovine: 93%
- Protein Families:** Druggable Genome, Transmembrane
- Protein Pathways:** ABC transporters
- Product images:**



WB Suggested Anti-ABCB6 Antibody Titration: 0.2-1 ug/ml; Positive Control: HeLa cell lysate; ABCB6 is supported by BioGPS gene expression data to be expressed in HeLa