

Product datasheet for **TA346414**

PSCA Rabbit Polyclonal Antibody

Product data:

Product Type:	Primary Antibodies
Applications:	WB
Recommended Dilution:	WB
Reactivity:	Human
Host:	Rabbit
Isotype:	IgG
Clonality:	Polyclonal
Immunogen:	The immunogen for anti-PSCA antibody: synthetic peptide directed towards the C terminal of human PSCA. Synthetic peptide located within the following region: TVISKGCSLNCVDDSDYVVGKKNITCCDTLDCNASGAHALQPAAAILAL
Formulation:	Liquid. Purified antibody supplied in 1x PBS buffer with 0.09% (w/v) sodium azide and 2% sucrose. <i>Note that this product is shipped as lyophilized powder to China customers.</i>
Purification:	Affinity Purified
Conjugation:	Unconjugated
Storage:	Store at -20°C as received.
Stability:	Stable for 12 months from date of receipt.
Predicted Protein Size:	13 kDa
Gene Name:	prostate stem cell antigen
Database Link:	NP_005663 Entrez Gene 8000 Human O43653



[View online »](#)

Background:

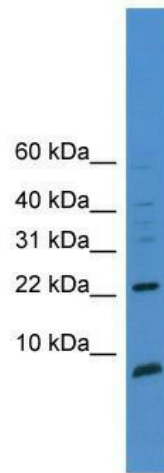
This gene encodes a glycosylphosphatidylinositol-anchored cell membrane glycoprotein. In addition to being highly expressed in the prostate it is also expressed in the bladder, placenta, colon, kidney, and stomach. This gene is up-regulated in a large proportion of prostate cancers and is also detected in cancers of the bladder and pancreas. This gene includes a polymorphism that results in an upstream start codon in some individuals; this polymorphism is thought to be associated with a risk for certain gastric and bladder cancers. Alternative splicing results in multiple transcript variants.

Synonyms:

PRO232

Note:

Immunogen Sequence Homology: Human: 100%; Dog: 86%; Pig: 79%; Rat: 79%; Mouse: 79%; Guinea pig: 79%

Product images:

WB Suggested Anti-PSCA Antibody Titration: 0.2-1 ug/ml; ELISA Titer: 1: 312500; Positive Control: 721_B cell lysate