

Product datasheet for **TA346413**

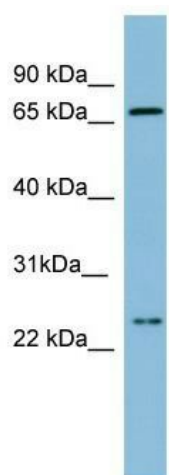
SLC6A8 Rabbit Polyclonal Antibody

Product data:

| | |
|-------------------------|---|
| Product Type: | Primary Antibodies |
| Applications: | WB |
| Recommended Dilution: | WB |
| Reactivity: | Human |
| Host: | Rabbit |
| Isotype: | IgG |
| Clonality: | Polyclonal |
| Immunogen: | The immunogen for anti-SLC6A8 antibody: synthetic peptide directed towards the middle region of human SLC6A8. Synthetic peptide located within the following region: VFSILGFMAAEQGVHISKVAESGPGLAFIAYPRAVTLMPVAPLWAAALFFF |
| Formulation: | Liquid. Purified antibody supplied in 1x PBS buffer with 0.09% (w/v) sodium azide and 2% sucrose. <i>Note that this product is shipped as lyophilized powder to China customers.</i> |
| Purification: | Affinity Purified |
| Conjugation: | Unconjugated |
| Storage: | Store at -20°C as received. |
| Stability: | Stable for 12 months from date of receipt. |
| Predicted Protein Size: | 70 kDa |
| Gene Name: | solute carrier family 6 member 8 |
| Database Link: | NP_005620 Entrez Gene 6535 Human P48029 |
| Background: | SLC6A8 is required for the uptake of creatine in muscles and brain. |
| Synonyms: | CCDS1; CRT; CRTR; CT1; CTR5 |
| Note: | Immunogen Sequence Homology: Dog: 100%; Horse: 100%; Human: 100%; Pig: 93%; Rat: 93%; Mouse: 93%; Bovine: 93%; Rabbit: 93%; Guinea pig: 93%; Zebrafish: 86% |
| Protein Families: | Druggable Genome, Transmembrane |



[View online »](#)

Product images:

WB Suggested Anti-SLC6A8 Antibody Titration:
0.2-1 ug/ml; ELISA Titer: 1: 312500; Positive
Control: Human Small Intestine