

Product datasheet for **TA346412**

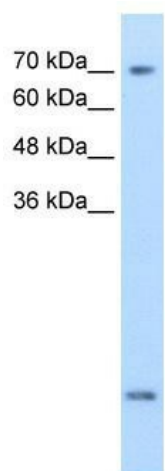
SLC6A8 Rabbit Polyclonal Antibody

Product data:

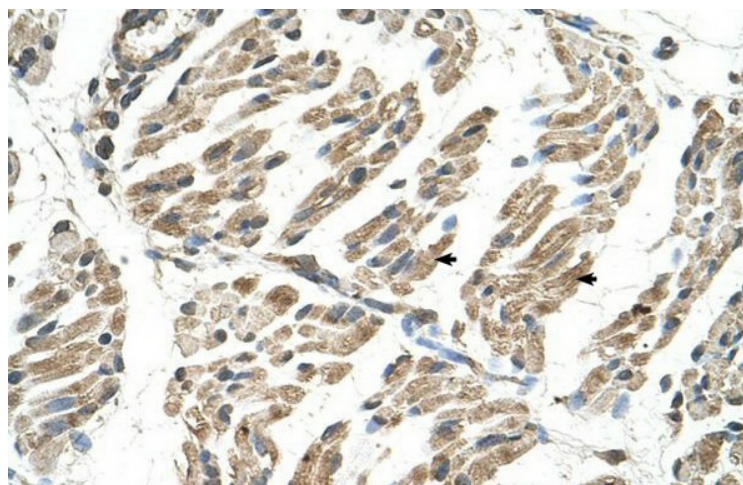
Product Type:	Primary Antibodies
Applications:	IHC, WB
Recommended Dilution:	WB, IHC
Reactivity:	Human
Host:	Rabbit
Isotype:	IgG
Clonality:	Polyclonal
Immunogen:	The immunogen for anti-SLC6A8 antibody: synthetic peptide directed towards the N terminal of human SLC6A8. Synthetic peptide located within the following region: CDQLADRRSPVIEFWENKVLRLSGGLEVPGALNWEVTLCLLACWVLVYFC
Formulation:	Liquid. Purified antibody supplied in 1x PBS buffer with 0.09% (w/v) sodium azide and 2% sucrose. <i>Note that this product is shipped as lyophilized powder to China customers.</i>
Purification:	Affinity Purified
Conjugation:	Unconjugated
Storage:	Store at -20°C as received.
Stability:	Stable for 12 months from date of receipt.
Predicted Protein Size:	70 kDa
Gene Name:	solute carrier family 6 member 8
Database Link:	NP_005620 Entrez Gene 6535 Human P48029
Background:	SLC6A8 is required for the uptake of creatine in muscles and brain.
Synonyms:	CCDS1; CRT; CRTR; CT1; CTR5
Note:	Immunogen Sequence Homology: Dog: 100%; Pig: 100%; Rat: 100%; Horse: 100%; Human: 100%; Mouse: 100%; Bovine: 100%; Guinea pig: 100%; Rabbit: 93%
Protein Families:	Druggable Genome, Transmembrane



[View online »](#)

Product images:

WB Suggested Anti-SLC6A8 Antibody Titration: 2.5 ug/ml; Positive Control: MDA-MB-435S cell lysate; SLC6A8 is strongly supported by BioGPS gene expression data to be expressed in Human MDA-MB435 cells



Rabbit Anti-SLC6A8 Antibody; Paraffin Embedded Tissue: Human Muscle; Cellular Data: Skeletal muscle cells; Antibody Concentration: 4.0-8.0 ug/ml; Magnification: 400X