

Product datasheet for **TA346411**

SLC1A5 Rabbit Polyclonal Antibody

Product data:

Product Type:	Primary Antibodies
Applications:	IHC, WB
Recommended Dilution:	WB, IHC
Reactivity:	Human
Host:	Rabbit
Isotype:	IgG
Clonality:	Polyclonal
Immunogen:	The immunogen for anti-SLC1A5 antibody: synthetic peptide directed towards the middle region of human SLC1A5. Synthetic peptide located within the following region: FGVALRKLGPPEGELLIRFFNSFNEATMVLVSWIMWYAPVGMFLVAGKIV
Formulation:	Liquid. Purified antibody supplied in 1x PBS buffer with 0.09% (w/v) sodium azide and 2% sucrose. <i>Note that this product is shipped as lyophilized powder to China customers.</i>
Purification:	Protein A Purified
Conjugation:	Unconjugated
Storage:	Store at -20°C as received.
Stability:	Stable for 12 months from date of receipt.
Predicted Protein Size:	60 kDa
Gene Name:	solute carrier family 1 member 5
Database Link:	NP_005619 Entrez Gene 6510 Human Q15758
Background:	SLC1A5 has a broad substrate specificity, a preference for zwitterionic amino acids, and a sodium-dependence. It accepts as substrates all neutral amino acids, including glutamine, asparagine, and branched-chain and aromatic amino acids, and excludes methylated amino acids, anionic amino acids, and cationic amino acids. It acts as a cell surface receptor for feline endogenous virus RD114, baboon M7 endogenous virus and type D simian retroviruses.



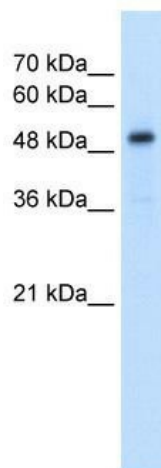
[View online »](#)

Synonyms: AAAT; ASCT2; ATBO; M7V1; M7VS1; R16; RDRC

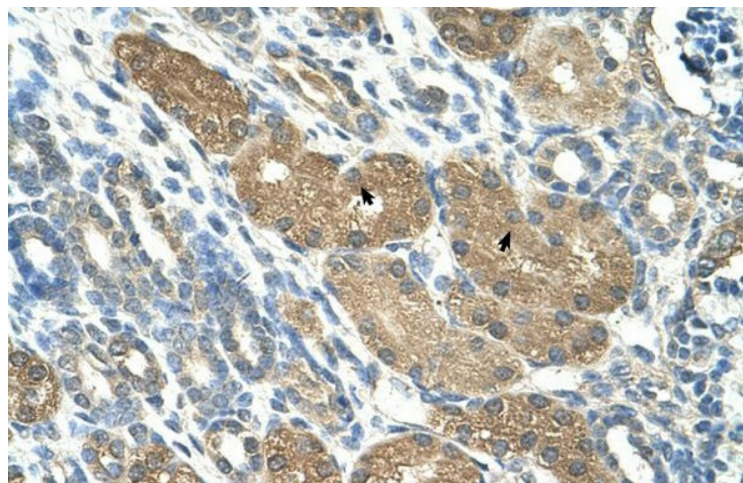
Note: Immunogen Sequence Homology: Dog: 100%; Pig: 100%; Rat: 100%; Horse: 100%; Human: 100%; Mouse: 100%; Sheep: 100%; Bovine: 100%; Rabbit: 93%; Guinea pig: 93%; Zebrafish: 86%

Protein Families: Druggable Genome, Transmembrane

Product images:



WB Suggested Anti-SLC1A5 Antibody Titration: 2.5 ug/ml; Positive Control: Jurkat cell lysate; SLC1A5 is supported by BioGPS gene expression data to be expressed in Jurkat



Rabbit Anti-SLC1A5 Antibody; Paraffin Embedded Tissue: Human Kidney; Cellular Data: Epithelial cells of renal tubule; Antibody Concentration: 4.0-8.0 ug/ml; Magnification: 400X