

Product datasheet for **TA346408**

IDH3A Rabbit Polyclonal Antibody

Product data:

Product Type:	Primary Antibodies
Applications:	WB
Recommended Dilution:	WB
Reactivity:	Human
Host:	Rabbit
Isotype:	IgG
Clonality:	Polyclonal
Immunogen:	The immunogen for anti-IDH3A antibody: synthetic peptide directed towards the middle region of human IDH3A. Synthetic peptide located within the following region: RHMGLFDHAARIEAACFATIKDGKSLTKDLGGNAKCSDFTEEICRRVKDL
Formulation:	Liquid. Purified antibody supplied in 1x PBS buffer with 0.09% (w/v) sodium azide and 2% sucrose. <i>Note that this product is shipped as lyophilized powder to China customers.</i>
Purification:	Affinity Purified
Conjugation:	Unconjugated
Storage:	Store at -20°C as received.
Stability:	Stable for 12 months from date of receipt.
Predicted Protein Size:	37 kDa
Gene Name:	isocitrate dehydrogenase 3 (NAD(+)) alpha
Database Link:	NP_005521 Entrez Gene 3419 Human P50213
Background:	Isocitrate dehydrogenases catalyze the oxidative decarboxylation of isocitrate to 2-oxoglutarate. These enzymes belong to two distinct subclasses, one of which utilizes NAD(+) as the electron acceptor and the other NADP(+). Five isocitrate dehydrogenases
Synonyms:	H-IDH alpha; isocitrate dehydrogenase (NAD+) alpha chain; isocitrate dehydrogenase 3 (NAD+) a; isocitrate dehydrogenase [NAD] subunit alpha; isocitric dehydrogenase; mitochondrial; NAD(H)-specific isocitrate dehydrogenase alpha subunit; NAD+-specific ICDH

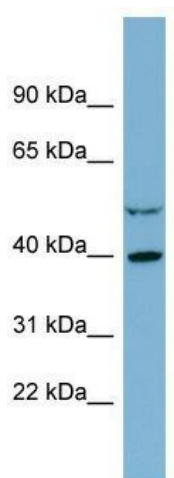


[View online »](#)

Note: Immunogen Sequence Homology: Dog: 100%; Pig: 100%; Rat: 100%; Horse: 100%; Human: 100%; Mouse: 100%; Rabbit: 100%; Bovine: 93%; Guinea pig: 93%; Yeast: 77%

Protein Pathways: Citrate cycle (TCA cycle), Metabolic pathways

Product images:



WB Suggested Anti-IDH3A Antibody Titration: 0.2-1 ug/ml; ELISA Titer: 1: 62500; Positive Control: COLO205 cell lysate; IDH3A is strongly supported by BioGPS gene expression data to be expressed in Human COLO205 cells