

Product datasheet for **TA346406**

SPRR3 Rabbit Polyclonal Antibody

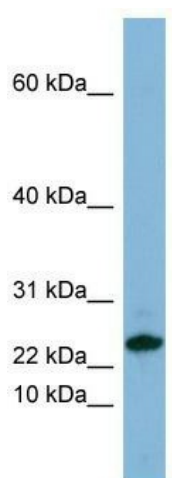
Product data:

Product Type:	Primary Antibodies
Applications:	WB
Recommended Dilution:	WB
Reactivity:	Human
Host:	Rabbit
Isotype:	IgG
Clonality:	Polyclonal
Immunogen:	The immunogen for anti-SPRR3 antibody: synthetic peptide directed towards the middle region of human SPRR3. Synthetic peptide located within the following region: DQGFIFPEPGAIVPEQGYTKVPVPGYTKLPEPCPSTVTPGPAQQKTKQ
Formulation:	Liquid. Purified antibody supplied in 1x PBS buffer with 0.09% (w/v) sodium azide and 2% sucrose.
Purification:	Affinity Purified
Conjugation:	Unconjugated
Storage:	Store at -20°C as received.
Stability:	Stable for 12 months from date of receipt.
Predicted Protein Size:	18 kDa
Gene Name:	small proline rich protein 3
Database Link:	NP_005407 Entrez Gene 6707 Human Q9UBC9
Background:	SPRR3 is the cross-linked envelope protein of keratinocytes.
Synonyms:	esophagin; OTTHUMP00000015757; small proline-rich protein 3
Note:	Immunogen Sequence Homology: Human: 100%; Rat: 92%; Mouse: 86%; Bovine: 86%; Rabbit: 85%; Pig: 79%



[View online »](#)

Product images:



WB Suggested Anti-SPRR3 Antibody Titration: 0.2-1 ug/ml; ELISA Titer: 1: 62500; Positive Control: HT1080 cell lysate