

Product datasheet for **TA346404**

MAGEA8 Rabbit Polyclonal Antibody

Product data:

| | |
|-------------------------|---|
| Product Type: | Primary Antibodies |
| Applications: | IHC, WB |
| Recommended Dilution: | WB, IHC |
| Reactivity: | Human |
| Host: | Rabbit |
| Isotype: | IgG |
| Clonality: | Polyclonal |
| Immunogen: | The immunogen for anti-MAGEA8 antibody: synthetic peptide directed towards the N terminal of human MAGEA8. Synthetic peptide located within the following region: EEVTDSGSPSPQSPGASSSLTVTDSTLWSQSDEGSSSNEEEGPSTSPD |
| Formulation: | Liquid. Purified antibody supplied in 1x PBS buffer with 0.09% (w/v) sodium azide and 2% sucrose. <i>Note that this product is shipped as lyophilized powder to China customers.</i> |
| Purification: | Affinity Purified |
| Conjugation: | Unconjugated |
| Storage: | Store at -20°C as received. |
| Stability: | Stable for 12 months from date of receipt. |
| Predicted Protein Size: | 35 kDa |
| Gene Name: | MAGE family member A8 |
| Database Link: | NP_005355 Entrez Gene 4107 Human P43361 |



[View online »](#)

Background:

MAGEA8 is a member of the MAGEA family. The members of this family with 50 to 80% sequence identity to each other. They have been implicated in some hereditary disorders, such as dyskeratosis congenita. This gene is a member of the MAGEA gene family. The members of this family encode proteins with 50 to 80% sequence identity to each other. The promoters and first exons of the MAGEA genes show considerable variability, suggesting that the existence of this gene family enables the same function to be expressed under different transcriptional controls. The MAGEA genes are clustered at chromosomal location Xq28. They have been implicated in some hereditary disorders, such as dyskeratosis congenita.

Synonyms:

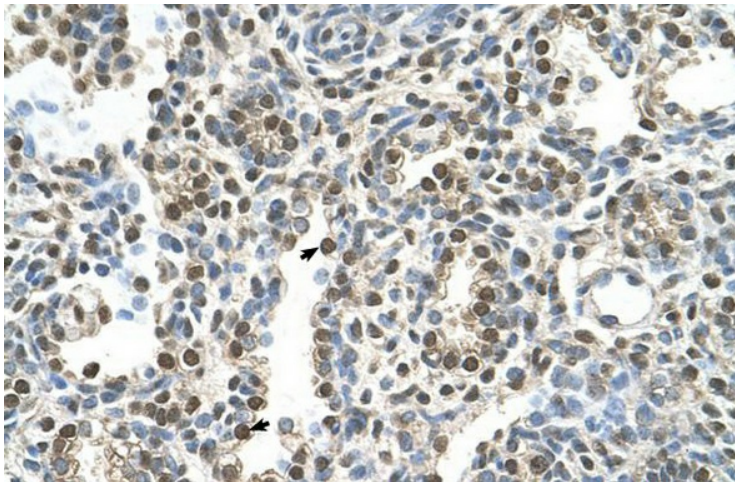
CT1.8; MAGE8

Note:

Immunogen Sequence Homology: Human: 100%

Product images:

WB Suggested Anti-MAGEA8 Antibody Titration: 0.2-1 ug/ml; Positive Control: Human Placenta



Rabbit Anti-MAGEA8 Antibody; Paraffin Embedded Tissue: Human Lung; Cellular Data: Alveolar cells; Antibody Concentration: 4.0-8.0 ug/ml; Magnification: 400X