

Product datasheet for **TA346402**

GPR6 Rabbit Polyclonal Antibody

Product data:

Product Type:	Primary Antibodies
Applications:	IHC, WB
Recommended Dilution:	WB, IHC
Reactivity:	Human
Host:	Rabbit
Isotype:	IgG
Clonality:	Polyclonal
Immunogen:	The immunogen for anti-GPR6 antibody: synthetic peptide directed towards the N terminal of human GPR6. Synthetic peptide located within the following region: NASAASLNDSQVWVVAEEGAAAAATAAGGPDTEWGPAAAAALGAGGGAN
Formulation:	Liquid. Purified antibody supplied in 1x PBS buffer with 0.09% (w/v) sodium azide and 2% sucrose. <i>Note that this product is shipped as lyophilized powder to China customers.</i>
Purification:	Affinity Purified
Conjugation:	Unconjugated
Storage:	Store at -20°C as received.
Stability:	Stable for 12 months from date of receipt.
Predicted Protein Size:	38 kDa
Gene Name:	G protein-coupled receptor 6
Database Link:	NP_005275 Entrez Gene 2830 Human P46095
Background:	GPR6 belongs to the G-protein coupled receptor 1 family. It is a receptor for the lysosphingolipid sphingosine 1-phosphate (S1P). S1P is a bioactive lysophospholipid that elicits diverse physiological effect on most types of cells and tissues. This receptor mediates its action by association with G proteins that activate a phosphatidylinositol-calcium second messenger system.
Synonyms:	G protein-coupled receptor 6

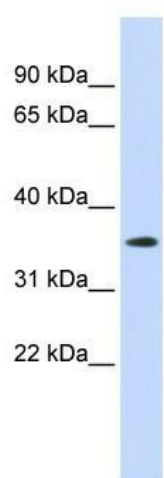


[View online »](#)

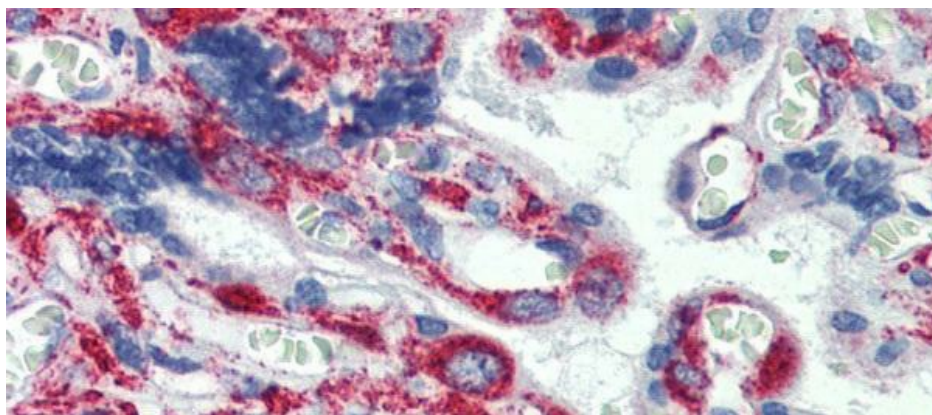
Note: Immunogen Sequence Homology: Human: 100%; Rat: 93%; Mouse: 93%; Bovine: 86%

Protein Families: Druggable Genome, GPCR, Transmembrane

Product images:



WB Suggested Anti-GPR6 Antibody Titration: 0.2-1 ug/ml; ELISA Titer: 1: 312500; Positive Control: Human Placenta



Immunohistochemistry with Human Placenta lysate tissue at an antibody concentration of 5.0 ug/ml using anti-GPR6 antibody