

Product datasheet for **TA346401**

Glycerol 3 Phosphate Dehydrogenase (GPD1) Rabbit Polyclonal Antibody

Product data:

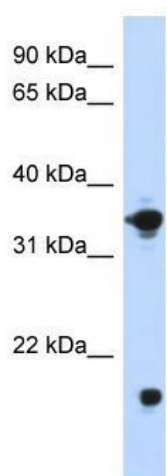
Product Type:	Primary Antibodies
Applications:	WB
Recommended Dilution:	WB
Reactivity:	Human
Host:	Rabbit
Isotype:	IgG
Clonality:	Polyclonal
Immunogen:	The immunogen for anti-GPD1 antibody: synthetic peptide directed towards the middle region of human GPD1. Synthetic peptide located within the following region: TFLESCGVADLITTCYGGNRNKVAEAFARTGKSIEQLEKELLNGQKLQGP
Formulation:	Liquid. Purified antibody supplied in 1x PBS buffer with 0.09% (w/v) sodium azide and 2% sucrose. <i>Note that this product is shipped as lyophilized powder to China customers.</i>
Purification:	Affinity Purified
Conjugation:	Unconjugated
Storage:	Store at -20°C as received.
Stability:	Stable for 12 months from date of receipt.
Predicted Protein Size:	37 kDa
Gene Name:	glycerol-3-phosphate dehydrogenase 1
Database Link:	NP_005267 Entrez Gene 2819 Human P21695
Background:	GPD1L belongs to the NAD-dependent glycerol-3-phosphate dehydrogenase family. Defects in GPD1L are the cause of Brugada syndrome type 2 (BRS2) and sudden infant death syndrome (SIDS).
Synonyms:	GPD-C; GPDH-C; HTGTI
Note:	Immunogen Sequence Homology: Human: 100%; Dog: 93%; Pig: 93%; Rat: 93%; Horse: 93%; Mouse: 93%; Yeast: 93%; Bovine: 93%; Rabbit: 93%; Guinea pig: 93%



[View online »](#)

Protein Pathways: Glycerophospholipid metabolism

Product images:



WB Suggested Anti-GPD1 Antibody Titration: 0.2-1 ug/ml; ELISA Titer: 1: 62500; Positive Control: Transfected 293T