

## Product datasheet for **TA346400**

### Glycerol 3 Phosphate Dehydrogenase (GPD1) Rabbit Polyclonal Antibody

#### Product data:

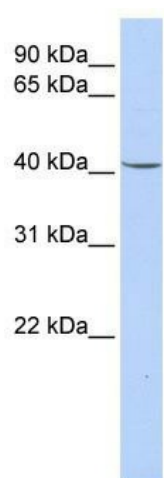
Product Type:	Primary Antibodies
Applications:	WB
Recommended Dilution:	WB
Reactivity:	Human
Host:	Rabbit
Isotype:	IgG
Clonality:	Polyclonal
Immunogen:	The immunogen for anti-GPD1 antibody: synthetic peptide directed towards the N terminal of human GPD1. Synthetic peptide located within the following region: KANATGISLIKGVDEGPNGLKLISEVIGERLGIPMSVLMGANIASEVADE
Formulation:	Liquid. Purified antibody supplied in 1x PBS buffer with 0.09% (w/v) sodium azide and 2% sucrose. <i>Note that this product is shipped as lyophilized powder to China customers.</i>
Purification:	Affinity Purified
Conjugation:	Unconjugated
Storage:	Store at -20°C as received.
Stability:	Stable for 12 months from date of receipt.
Predicted Protein Size:	37 kDa
Gene Name:	glycerol-3-phosphate dehydrogenase 1
Database Link:	<a href="#">NP_005267</a> <a href="#">Entrez Gene 2819 Human</a> <a href="#">P21695</a>
Background:	GPD1 belongs to the NAD-dependent glycerol-3-phosphate dehydrogenase family. The gene encoding GpD1 protein is a weight-loss-responsive gene in skeletal muscle. Its observed transcriptional modulation may decrease triglyceride synthesis, with weight loss.
Synonyms:	GPD-C; GPDH-C; HTGTI
Note:	Immunogen Sequence Homology: Pig: 100%; Horse: 100%; Human: 100%; Mouse: 100%; Guinea pig: 100%; Rat: 93%; Bovine: 93%; Rabbit: 93%; Zebrafish: 93%; Dog: 86%



[View online »](#)

Protein Pathways: Glycerophospholipid metabolism

### Product images:



WB Suggested Anti-GPD1 Antibody Titration: 0.2-1 ug/ml; ELISA Titer: 1: 312500; Positive Control: Human Lung