

Product datasheet for **TA346398**

SLC35D3 Rabbit Polyclonal Antibody

Product data:

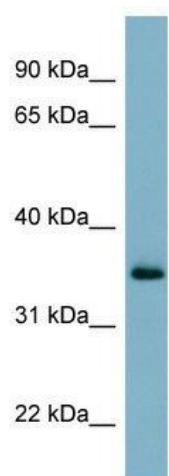
Product Type:	Primary Antibodies
Applications:	WB
Recommended Dilution:	WB
Reactivity:	Human
Host:	Rabbit
Isotype:	IgG
Clonality:	Polyclonal
Immunogen:	The immunogen for anti-GEM antibody: synthetic peptide directed towards the N terminal of human GEM. Synthetic peptide located within the following region: KEPHQYSHRNRHSATPEDHCRRSWSSDSTDSVISSESGNTYYRVVLIGEQ
Formulation:	Liquid. Purified antibody supplied in 1x PBS buffer with 0.09% (w/v) sodium azide and 2% sucrose. <i>Note that this product is shipped as lyophilized powder to China customers.</i>
Purification:	Affinity Purified
Conjugation:	Unconjugated
Storage:	Store at -20°C as received.
Stability:	Stable for 12 months from date of receipt.
Predicted Protein Size:	34 kDa
Gene Name:	solute carrier family 35 member D3
Database Link:	NP_001008783 Entrez Gene 340146 Human Q5M8T2
Background:	GEM belongs to the RAD/GEM family of GTP-binding proteins. It is associated with the inner face of the plasma membrane and could play a role as a regulatory protein in receptor-mediated signal transduction.
Synonyms:	FRCL1
Note:	Immunogen Sequence Homology: Dog: 100%; Pig: 100%; Rat: 100%; Horse: 100%; Human: 100%; Mouse: 100%; Bovine: 100%; Rabbit: 100%; Guinea pig: 100%



[View online »](#)

Protein Families: Transmembrane

Product images:



WB Suggested Anti-GEM Antibody Titration: 0.2-1 ug/ml; ELISA Titer: 1: 62500; Positive Control: OVCAR-3 cell lysate