

Product datasheet for **TA346396**

Fibrinogen beta chain (FGB) Rabbit Polyclonal Antibody

Product data:

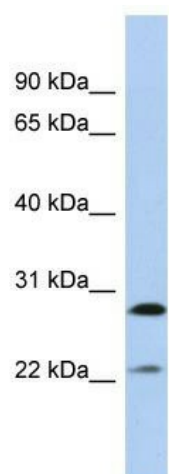
Product Type:	Primary Antibodies
Applications:	WB
Recommended Dilution:	WB
Reactivity:	Human
Host:	Rabbit
Isotype:	IgG
Clonality:	Polyclonal
Immunogen:	The immunogen for Anti-FGB antibody is: synthetic peptide directed towards the middle region of Human FGB. Synthetic peptide located within the following region: GNDKISQLTRMGPTELLIEMEDWKGDKVKAHYGGFTVQNEANKYQISVNK
Formulation:	Liquid. Purified antibody supplied in 1x PBS buffer with 0.09% (w/v) sodium azide and 2% sucrose. <i>Note that this product is shipped as lyophilized powder to China customers.</i>
Purification:	Affinity Purified
Conjugation:	Unconjugated
Storage:	Store at -20°C as received.
Stability:	Stable for 12 months from date of receipt.
Predicted Protein Size:	29 kDa
Gene Name:	fibrinogen beta chain
Database Link:	NP_001171670 Entrez Gene 2244 Human P02675
Background:	The function of this protein remains unknown.
Synonyms:	HEL-S-78p
Note:	Immunogen Sequence Homology: Pig: 100%; Human: 100%; Mouse: 100%; Guinea pig: 100%; Rat: 93%; Rabbit: 93%; Bovine: 91%; Dog: 86%
Protein Families:	Druggable Genome, Secreted Protein



[View online »](#)

Protein Pathways: Complement and coagulation cascades

Product images:



Host: Rabbit; Target Name: FGB; Sample Tissue: MCF7 Whole Cell lysates; Antibody Dilution: 1.0 ug/ml