

Product datasheet for **TA346393**

SLC4A3 Rabbit Polyclonal Antibody

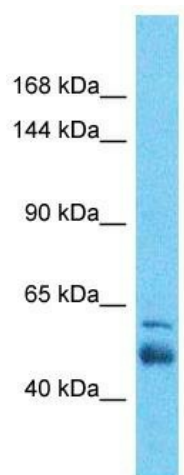
Product data:

Product Type:	Primary Antibodies
Applications:	WB
Recommended Dilution:	WB
Reactivity:	Human
Host:	Rabbit
Isotype:	IgG
Clonality:	Polyclonal
Immunogen:	The immunogen for Anti-SLC4A3 antibody is: synthetic peptide directed towards the N-terminal region of Human SLC4A3. Synthetic peptide located within the following region: DDLGKTLAVSRFGDLISKPPAWDPEKPSRSYSERDFEFHRHTSHHTHHPL
Formulation:	Liquid. Purified antibody supplied in 1x PBS buffer with 0.09% (w/v) sodium azide and 2% sucrose.
Purification:	Affinity Purified
Conjugation:	Unconjugated
Storage:	Store at -20°C as received.
Stability:	Stable for 12 months from date of receipt.
Predicted Protein Size:	56 kDa
Gene Name:	solute carrier family 4 member 3
Database Link:	NP_005061 Entrez Gene 6508 Human P48751
Background:	The function of this protein remains unknown.
Synonyms:	AE3; BAE3; CAE3; SLC2C
Note:	Immunogen Sequence Homology: Dog: 100%; Pig: 100%; Rat: 100%; Horse: 100%; Human: 100%; Mouse: 100%; Bovine: 100%; Guinea pig: 100%; Rabbit: 86%; Zebrafish: 77%
Protein Families:	Transmembrane



[View online »](#)

Product images:



Host: Rabbit

Target Name: SLC4A3

Sample Tissue: Esophagus Tumor Lysate

Antibody Dilution: 1.0 μ g/ml

Host: Rabbit; Target Name: SLC4A3; Sample Tissue: Esophagus Tumor lysates; Antibody Dilution: 1.0 ug/ml