

Product datasheet for **TA346390**

Perforin (PRF1) Rabbit Polyclonal Antibody

Product data:

Product Type:	Primary Antibodies
Applications:	WB
Recommended Dilution:	WB
Reactivity:	Human
Host:	Rabbit
Isotype:	IgG
Clonality:	Polyclonal
Immunogen:	The immunogen for anti-PRF1 antibody: synthetic peptide directed towards the N terminal of human PRF1. Synthetic peptide located within the following region: SVAGSHSQAANFAAQKTHQDQYSFSTDTVECRFYSFHVHTPPLHPDFKR
Formulation:	Liquid. Purified antibody supplied in 1x PBS buffer with 0.09% (w/v) sodium azide and 2% sucrose. <i>Note that this product is shipped as lyophilized powder to China customers.</i>
Purification:	Affinity Purified
Conjugation:	Unconjugated
Storage:	Store at -20°C as received.
Stability:	Stable for 12 months from date of receipt.
Predicted Protein Size:	59 kDa
Gene Name:	perforin 1
Database Link:	NP_005032 Entrez Gene 5551 Human P14222



[View online »](#)

Background:

PRF1 has structural and functional similarities to complement component 9 (C9). Like C9, this protein creates transmembrane tubules and is capable of lysing non-specifically a variety of target cells. This protein is one of the main cytolytic proteins of cytolytic granules, and it is known to be a key effector molecule for T-cell- and natural killer-cell-mediated cytotoxicity. Defects in the gene encoding PRF1 cause familial hemophagocytic lymphohistiocytosis type 2 (HPLH2), a rare and lethal autosomal recessive disorder of early childhood. The protein encoded by this gene has structural and functional similarities to complement component 9 (C9). Like C9, this protein creates transmembrane tubules and is capable of lysing non-specifically a variety of target cells. This protein is one of the main cytolytic proteins of cytolytic granules, and it is known to be a key effector molecule for T-cell- and natural killer-cell-mediated cytotoxicity. Defects in this gene cause familial hemophagocytic lymphohistiocytosis type 2 (HPLH2), a rare and lethal autosomal recessive disorder of early childhood. Alternative splicing results in multiple transcript variants encoding the same protein.

Synonyms:

FLH2; HPLH2; P1; PFN1; PFP

Note:

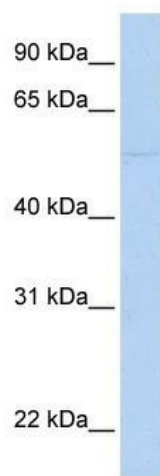
Immunogen Sequence Homology: Pig: 100%; Human: 100%; Dog: 92%; Rabbit: 92%; Horse: 85%; Rat: 77%; Bovine: 77%; Guinea pig: 77%

Protein Families:

Druggable Genome

Protein Pathways:

Allograft rejection, Autoimmune thyroid disease, Graft-versus-host disease, Natural killer cell mediated cytotoxicity, Type I diabetes mellitus, Viral myocarditis

Product images:

WB Suggested Anti-PRF1 Antibody Titration: 0.2-1 ug/ml; Positive Control: MCF7 cell lysate