

Product datasheet for **TA346389**

ALS (IGFALS) Rabbit Polyclonal Antibody

Product data:

Product Type:	Primary Antibodies
Applications:	WB
Recommended Dilution:	WB
Reactivity:	Human
Host:	Rabbit
Isotype:	IgG
Clonality:	Polyclonal
Immunogen:	The immunogen for anti-IGFALS antibody: synthetic peptide directed towards the middle region of human IGFALS. Synthetic peptide located within the following region: DCGCPLKALRDFALQNPSAVPRFVQAICEGDDCQPPAYTYNNITCASPPE
Formulation:	Liquid. Purified antibody supplied in 1x PBS buffer with 0.09% (w/v) sodium azide and 2% sucrose. <i>Note that this product is shipped as lyophilized powder to China customers.</i>
Purification:	Affinity Purified
Conjugation:	Unconjugated
Storage:	Store at -20°C as received.
Stability:	Stable for 12 months from date of receipt.
Predicted Protein Size:	63 kDa
Gene Name:	insulin like growth factor binding protein acid labile subunit
Database Link:	NP_004961 Entrez Gene 3483 Human P35858
Background:	Adaptor proteins are usually required for transcriptional activation, possibly to acetylate and destabilize nucleosomes, thereby relieving chromatin constraints at the promoter. TADA3L is a transcriptional activator adaptor and has been found to be part of the PCAF histone acetylase complex. In addition, it associates with the tumor suppressor protein p53 and is required for full activity of p53 and p53-mediated apoptosis.
Synonyms:	ACLSL; ALS

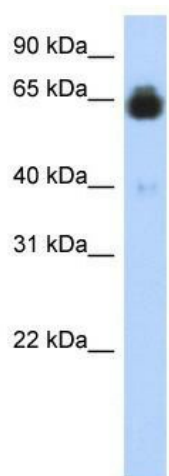


[View online »](#)

Note: Immunogen Sequence Homology: Rat: 100%; Human: 100%; Mouse: 100%; Pig: 93%; Guinea pig: 93%

Protein Families: Druggable Genome, Secreted Protein

Product images:



WB Suggested Anti-IGFALS Antibody Titration:
0.2-1 ug/ml; ELISA Titer: 1: 1562500; Positive
Control: Transfected 293T