

Product datasheet for **TA346387**

CD8B Rabbit Polyclonal Antibody

Product data:

Product Type:	Primary Antibodies
Applications:	WB
Recommended Dilution:	WB
Reactivity:	Human
Host:	Rabbit
Isotype:	IgG
Clonality:	Polyclonal
Immunogen:	The immunogen for anti-CD8B antibody: synthetic peptide directed towards the middle region of human CD8B. Synthetic peptide located within the following region: KPEDSGIYFCMIVGSPELTFGKGTQLSVDFLPTTAQPTKKSTLKKRVCR
Formulation:	Liquid. Purified antibody supplied in 1x PBS buffer with 0.09% (w/v) sodium azide and 2% sucrose. <i>Note that this product is shipped as lyophilized powder to China customers.</i>
Purification:	Affinity Purified
Conjugation:	Unconjugated
Storage:	Store at -20°C as received.
Stability:	Stable for 12 months from date of receipt.
Predicted Protein Size:	21 kDa
Gene Name:	CD8b molecule
Database Link:	NP_004922 Entrez Gene 926 Human P10966



[View online »](#)

Background:

The CD8 antigen is a cell surface glycoprotein found on most cytotoxic T lymphocytes that mediates efficient cell-cell interactions within the immune system. The CD8 antigen, acting as a coreceptor, and the T-cell receptor on the T lymphocyte recognize antigen displayed by an antigen presenting cell (APC) in the context of class I MHC molecules. The functional coreceptor is either a homodimer composed of two alpha chains, or a heterodimer composed of one alpha and one beta chain. Both alpha and beta chains share significant homology to immunoglobulin variable light chains. CD8B is the CD8 beta chain isoforms.

Synonyms:

CD8B1; LEU2; LY3; LYT3; P37

Note:

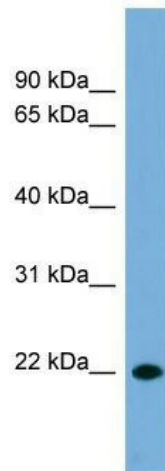
Immunogen Sequence Homology: Human: 100%; Rabbit: 93%; Rat: 85%; Dog: 79%

Protein Families:

Druggable Genome, Secreted Protein, Transmembrane

Protein Pathways:

Antigen processing and presentation, Cell adhesion molecules (CAMs), Hematopoietic cell lineage, Primary immunodeficiency, T cell receptor signaling pathway

Product images:

WB Suggested Anti-CD8B Antibody Titration: 0.2-1 ug/ml; Positive Control: HT1080 cell lysate