

Product datasheet for **TA346384**

alpha Actinin 4 (ACTN4) Rabbit Polyclonal Antibody

Product data:

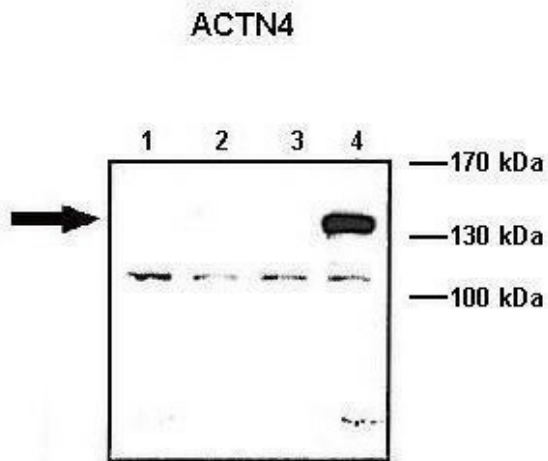
Product Type:	Primary Antibodies
Applications:	IHC, WB
Recommended Dilution:	IHC, WB
Reactivity:	Human
Host:	Rabbit
Isotype:	IgG
Clonality:	Polyclonal
Immunogen:	The immunogen for anti-ACTN4 antibody: synthetic peptide directed towards the N terminal of human ACTN4. Synthetic peptide located within the following region: LIHRHRPELIEYDKLRKDDPVTNLNNAFEVAEKYLDIPKMLDAEDIVNTA
Formulation:	Liquid. Purified antibody supplied in 1x PBS buffer with 0.09% (w/v) sodium azide and 2% sucrose. <i>Note that this product is shipped as lyophilized powder to China customers.</i>
Purification:	Protein A Purified
Conjugation:	Unconjugated
Storage:	Store at -20°C as received.
Stability:	Stable for 12 months from date of receipt.
Predicted Protein Size:	100 kDa
Gene Name:	actinin alpha 4
Database Link:	NP_004915 Entrez Gene 81 Human O43707



[View online »](#)

Background:	<p>Alpha actinins belong to the spectrin superfamily which represents a diverse group of cytoskeletal proteins, including the alpha and beta spectrins and dystrophins. Alpha actinin is an actin-binding protein with multiple roles in different cell types. In nonmuscle cells, the cytoskeletal isoform is found along microfilament bundles and adherens-type junctions, where it is involved in binding actin to the membrane. In contrast, skeletal, cardiac, and smooth muscle isoforms are localized to the Z-disc and analogous dense bodies, where they help anchor the myofibrillar actin filaments. ACTN4 is a nonmuscle, alpha actinin isoform which is concentrated in the cytoplasm, and thought to be involved in metastatic processes. Mutations in its gene have been associated with focal and segmental glomerulosclerosis.</p> <p>Alpha actinins belong to the spectrin gene superfamily which represents a diverse group of cytoskeletal proteins, including the alpha and beta spectrins and dystrophins. Alpha actinin is an actin-binding protein with multiple roles in different cell types. In nonmuscle cells, the cytoskeletal isoform is found along microfilament bundles and adherens-type junctions, where it is involved in binding actin to the membrane. In contrast, skeletal, cardiac, and smooth muscle isoforms are localized to the Z-disc and analogous dense bodies, where they help anchor the myofibrillar actin filaments. This gene encodes a nonmuscle, alpha actinin isoform which is concentrated in the cytoplasm, and thought to be involved in metastatic processes. Mutations in this gene have been associated with focal and segmental glomerulosclerosis.</p>
Synonyms:	ACTININ-4; FSGS; FSGS1
Note:	Immunogen Sequence Homology: Dog: 100%; Pig: 100%; Rat: 100%; Horse: 100%; Human: 100%; Mouse: 100%; Bovine: 100%; Rabbit: 100%; Guinea pig: 100%; Zebrafish: 93%
Protein Families:	Druggable Genome
Protein Pathways:	Adherens junction, Arrhythmogenic right ventricular cardiomyopathy (ARVC), Focal adhesion, Leukocyte transendothelial migration, Regulation of actin cytoskeleton, Systemic lupus erythematosus, Tight junction

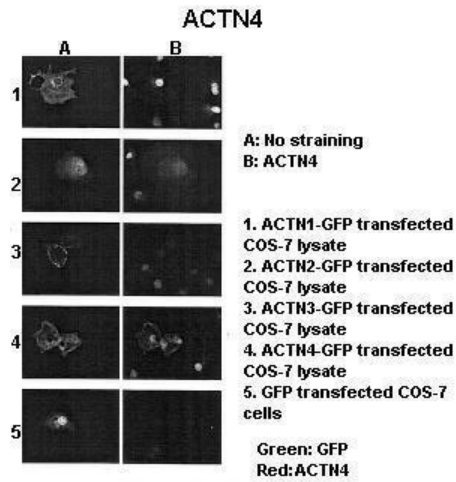
Product images:



Lanes: Lane 1: 10 ug ACTN1-GFP transfected COS-7 lysate; Lane 2: 10 ug ACTN2-GFP transfected COS-7 lysate; Lane 3: 10 ug ACTN3-GFP transfected COS-7 lysate; Lane 4: 10 ug ACTN4-GFP transfected COS-7 lysate; Primary Antibody Dilution: 1: 1000; Secondary Antibody: Anti-rabbit HRP; Secondary Antibody Dilution: 1: 5000; Gene Name: ACTN4; Submitted by: Johannes W. Hell, University of California;



WB Suggested Anti-ACTN4 Antibody Titration: 0.625 ug/ml; Positive Control: HCT116 cell lysate; ACTN4 is supported by BioGPS gene expression data to be expressed in HCT116



Sample Type: ACTNX-GFP transfected COS-7 cells
 Primary Antibody Dilution: 1: 1000; Secondary Antibody: Anti-rabbit-Alexa-Fluor 568; Secondary Antibody: dilution: 1: 100; Color/Signal Descriptions: Green: GFP Red: ACTN4; Gene Name: ACTN4; Submitted by: Johannes W. Hell, Ph.D., Professor, Department of Pharmacology, University of California, Room 2419D Tupper Hall, Davis, CA 95616-5270, Phone: (530) 752 6540, Lab: (530) 752 7551, FAX: (530) 752 7710