

## Product datasheet for **TA346382**

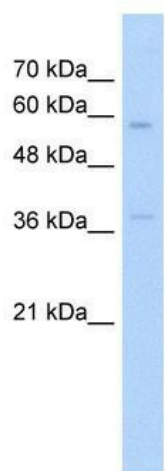
### OSCP (ITGBL1) Rabbit Polyclonal Antibody

#### Product data:

Product Type:	Primary Antibodies
Applications:	WB
Recommended Dilution:	WB
Reactivity:	Human
Host:	Rabbit
Isotype:	IgG
Clonality:	Polyclonal
Immunogen:	The immunogen for anti-ITGBL1 antibody: synthetic peptide directed towards the N terminal of human ITGBL1. Synthetic peptide located within the following region: CSNAGTCHCGRCKCDNSDGSLVYGKFCECDDRECIDDETEEICGGHGKC
Formulation:	Liquid. Purified antibody supplied in 1x PBS buffer with 0.09% (w/v) sodium azide and 2% sucrose. <i>Note that this product is shipped as lyophilized powder to China customers.</i>
Purification:	Protein A Purified
Conjugation:	Unconjugated
Storage:	Store at -20°C as received.
Stability:	Stable for 12 months from date of receipt.
Predicted Protein Size:	54 kDa
Gene Name:	integrin subunit beta like 1
Database Link:	<a href="#">NP_004782</a> <a href="#">Entrez Gene 9358 Human</a> <a href="#">O95965</a>
Background:	ITGBL1 may be linked in some way with the evolution of the integrin beta subunits.
Synonyms:	OSCP; TIED
Note:	Immunogen Sequence Homology: Human: 100%; Pig: 93%; Horse: 93%; Bovine: 93%; Rabbit: 93%; Dog: 86%; Rat: 86%; Mouse: 86%; Guinea pig: 86%



[View online »](#)

**Product images:**

WB Suggested Anti-ITGBL1 Antibody Titration: 5.0 ug/ml; Positive Control: HepG2 cell lysate