

Product datasheet for **TA346381**

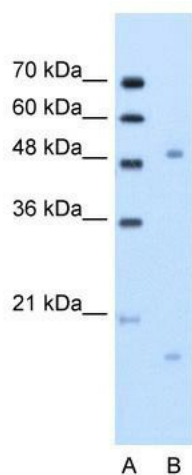
OSCP (ITGBL1) Rabbit Polyclonal Antibody

Product data:

Product Type:	Primary Antibodies
Applications:	WB
Recommended Dilution:	WB
Reactivity:	Human
Host:	Rabbit
Isotype:	IgG
Clonality:	Polyclonal
Immunogen:	The immunogen for anti-ITGBL1 antibody: synthetic peptide directed towards the N terminal of human ITGBL1. Synthetic peptide located within the following region: MRPPGFRNFLLLASSLLFAGLSAVPQSFPSLRSWPGAACRLSRAESERR
Formulation:	Liquid. Purified antibody supplied in 1x PBS buffer with 0.09% (w/v) sodium azide and 2% sucrose.
Purification:	Protein A Purified
Conjugation:	Unconjugated
Storage:	Store at -20°C as received.
Stability:	Stable for 12 months from date of receipt.
Predicted Protein Size:	54 kDa
Gene Name:	integrin subunit beta like 1
Database Link:	NP_004782 Entrez Gene 9358 Human O95965
Background:	The function remains unknown.
Synonyms:	OSCP; TIED
Note:	Immunogen Sequence Homology: Dog: 100%; Pig: 100%; Horse: 100%; Human: 100%; Rat: 93%; Mouse: 86%; Guinea pig: 80%


[View online »](#)

Product images:



WB Suggested Anti-ITGBL1 Antibody Titration: 2.5 ug/ml; Positive Control: Jurkat cell lysate