

Product datasheet for **TA346378**

Dystrophia myotonica protein kinase (DMPK) Rabbit Polyclonal Antibody

Product data:

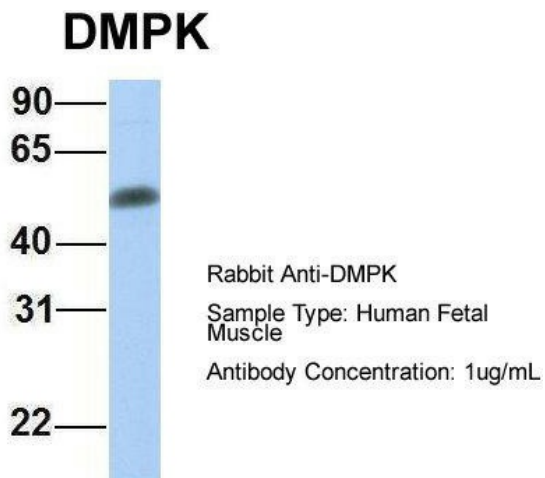
Product Type:	Primary Antibodies
Applications:	IHC, WB
Recommended Dilution:	WB, IHC
Reactivity:	Human
Host:	Rabbit
Isotype:	IgG
Clonality:	Polyclonal
Immunogen:	The immunogen for anti-DMPK antibody: synthetic peptide directed towards the middle region of human DMPK. Synthetic peptide located within the following region: TRLGRGGAGDFRTHPFFFGLDWDGLRDSVPPFTPDFEGATDTCNFDLVED
Formulation:	Liquid. Purified antibody supplied in 1x PBS buffer with 0.09% (w/v) sodium azide and 2% sucrose. <i>Note that this product is shipped as lyophilized powder to China customers.</i>
Purification:	Affinity Purified
Conjugation:	Unconjugated
Storage:	Store at -20°C as received.
Stability:	Stable for 12 months from date of receipt.
Predicted Protein Size:	69 kDa
Gene Name:	dystrophia myotonica protein kinase
Database Link:	NP_004400 Entrez Gene 1760 Human Q09013
Background:	The protein encoded by this gene is a serine-threonine kinase that is closely related to other kinases that interact with members of the Rho family of small GTPases. Substrates for this enzyme include myogenin, the beta-subunit of the L-type calcium channel
Synonyms:	DM; DM1; DM1PK; DMK; MDPK; MT-PK
Note:	Immunogen Sequence Homology: Dog: 100%; Pig: 100%; Rat: 100%; Human: 100%; Mouse: 100%; Bovine: 100%; Guinea pig: 100%; Horse: 93%



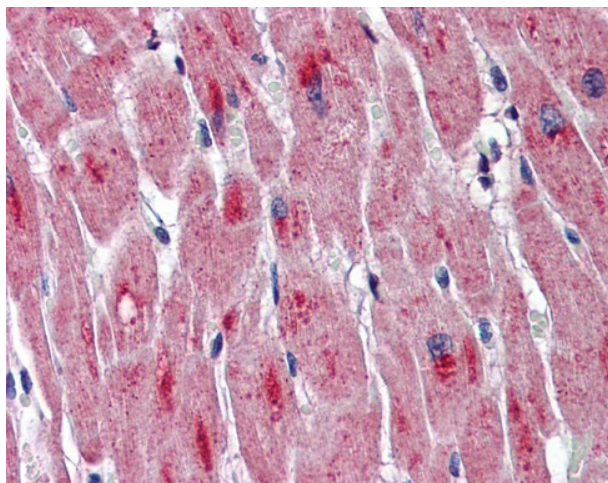
[View online »](#)

Protein Families: Druggable Genome, Protein Kinase

Product images:



Host: Rabbit; Target Name: DMPK; Sample Tissue: Human Fetal Muscle; Antibody Dilution: 1.0 ug/ml



Heart