

## Product datasheet for **TA346376**

### Acid Phosphatase (ACP1) Rabbit Polyclonal Antibody

#### Product data:

Product Type:	Primary Antibodies
Applications:	IHC, WB
Recommended Dilution:	WB, IHC
Reactivity:	Human
Host:	Rabbit
Isotype:	IgG
Clonality:	Polyclonal
Immunogen:	The immunogen for anti-ACP1 antibody: synthetic peptide directed towards the N terminal of human ACP1. Synthetic peptide located within the following region: PIAEAVFRKLVTDQNISENWRVDSAATSGYEIGNPPDYRGQSCMKRHGIP
Formulation:	Liquid. Purified antibody supplied in 1x PBS buffer with 0.09% (w/v) sodium azide and 2% sucrose. <i>Note that this product is shipped as lyophilized powder to China customers.</i>
Purification:	Protein A Purified
Conjugation:	Unconjugated
Storage:	Store at -20°C as received.
Stability:	Stable for 12 months from date of receipt.
Predicted Protein Size:	17 kDa
Gene Name:	acid phosphatase 1, soluble
Database Link:	<a href="#">NP_004291</a> <a href="#">Entrez Gene 52 Human</a> <a href="#">P24666</a>



[View online »](#)

**Background:**

ACP1 belongs to the phosphotyrosine protein phosphatase family of proteins. It functions as an acid phosphatase and a protein tyrosine phosphatase by hydrolyzing protein tyrosine phosphate to protein tyrosine and orthophosphate. This enzyme also hydrolyzes orthophosphoric monoesters to alcohol and orthophosphate. The product of this gene belongs to the phosphotyrosine protein phosphatase family of proteins. It functions as an acid phosphatase and a protein tyrosine phosphatase by hydrolyzing protein tyrosine phosphate to protein tyrosine and orthophosphate. This enzyme also hydrolyzes orthophosphoric monoesters to alcohol and orthophosphate. This gene is genetically polymorphic, and three common alleles segregating at the corresponding locus give rise to six phenotypes. Each allele appears to encode at least two electrophoretically different isozymes, Bf and Bs, which are produced in allele-specific ratios. Three transcript variants encoding distinct isoforms have been identified for this gene.

**Synonyms:**

HAAP

**Note:**

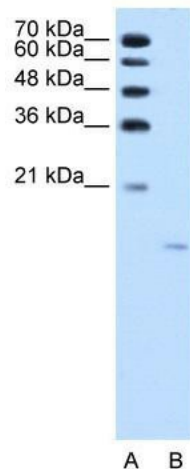
Immunogen Sequence Homology: Rat: 100%; Horse: 100%; Human: 100%; Rabbit: 100%; Pig: 92%; Mouse: 92%; Bovine: 83%

**Protein Families:**

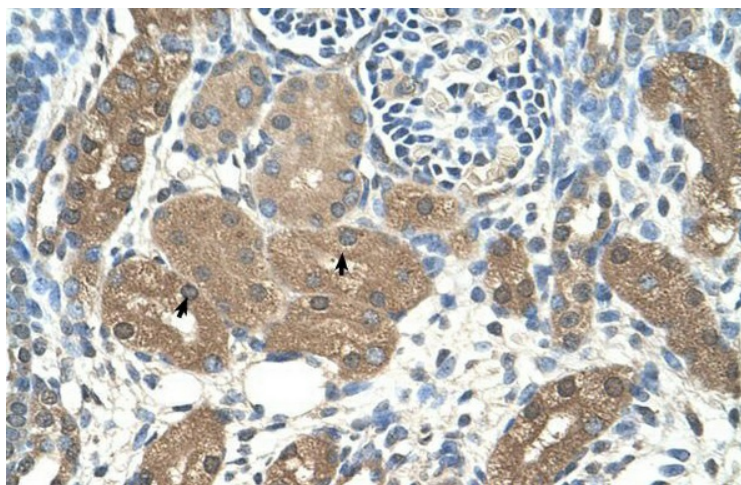
Druggable Genome, Phosphatase, Transmembrane

**Protein Pathways:**

Adherens junction, Riboflavin metabolism

**Product images:**

WB Suggested Anti-ACP1 Antibody Titration: 1.25 ug/ml; Positive Control: Jurkat cell lysate; ACP1 is strongly supported by BioGPS gene expression data to be expressed in Human Jurkat cells



Rabbit Anti-ACP1 Antibody; Paraffin Embedded Tissue: Human Kidney; Cellular Data: Epithelial cells of renal tubule; Antibody Concentration: 4.0-8.0 ug/ml; Magnification: 400X