

Product datasheet for **TA346372**

CA8 Rabbit Polyclonal Antibody

Product data:

Product Type:	Primary Antibodies
Applications:	WB
Recommended Dilution:	WB
Reactivity:	Human
Host:	Rabbit
Isotype:	IgG
Clonality:	Polyclonal
Immunogen:	The immunogen for anti-CA8 antibody: synthetic peptide directed towards the middle region of human CA8. Synthetic peptide located within the following region: TISQLQIEFRRLRTHVKGAELVEGCDGILGDNFRPTQPLSDRVIRAAFQ
Formulation:	Liquid. Purified antibody supplied in 1x PBS buffer with 0.09% (w/v) sodium azide and 2% sucrose. <i>Note that this product is shipped as lyophilized powder to China customers.</i>
Purification:	Affinity Purified
Conjugation:	Unconjugated
Storage:	Store at -20°C as received.
Stability:	Stable for 12 months from date of receipt.
Predicted Protein Size:	33 kDa
Gene Name:	carbonic anhydrase 8
Database Link:	NP_004047 Entrez Gene 767 Human P35219



[View online »](#)

Background:

CA8 was initially named CA-related protein because of sequence similarity to other known carbonic anhydrase genes. However, CA8 lacks carbonic anhydrase activity (i.e., the reversible hydration of carbon dioxide). CA8 continues to carry a carbonic anhydrase designation based on clear sequence identity to other members of the carbonic anhydrase gene family. The protein encoded by this gene was initially named CA-related protein because of sequence similarity to other known carbonic anhydrase genes. However, the gene product lacks carbonic anhydrase activity (i.e., the reversible hydration of carbon dioxide). The gene product continues to carry a carbonic anhydrase designation based on clear sequence identity to other members of the carbonic anhydrase gene family. The absence of CA8 gene transcription in the cerebellum of the lurcher mutant in mice with a neurologic defect suggests an important role for this acatalytic form.

Synonyms:

CA-RP; CA-VIII; CALS; CAMRQ3; CARP

Note:

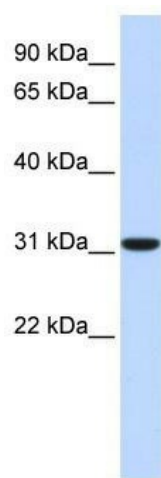
Immunogen Sequence Homology: Dog: 100%; Pig: 100%; Rat: 100%; Horse: 100%; Human: 100%; Mouse: 100%; Bovine: 100%; Rabbit: 100%; Zebrafish: 100%; Guinea pig: 100%

Protein Families:

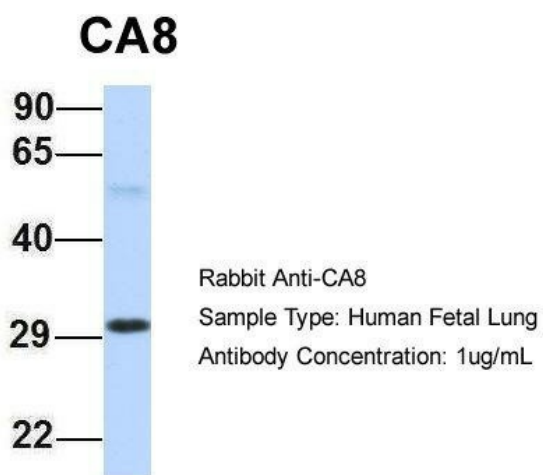
Druggable Genome

Protein Pathways:

Nitrogen metabolism

Product images:

WB Suggested Anti-CA8 Antibody Titration: 0.2-1 ug/ml; ELISA Titer: 1: 62500; Positive Control: Human Liver



Host: Rabbit; Target Name: CA8; Sample Tissue: Human Fetal Lung; Antibody Dilution: 1.0 ug/ml