

Product datasheet for **TA346370**

NFkB Inducing Kinase NIK (MAP3K14) Rabbit Polyclonal Antibody

Product data:

Product Type:	Primary Antibodies
Applications:	WB
Recommended Dilution:	WB
Reactivity:	Human
Host:	Rabbit
Isotype:	IgG
Clonality:	Polyclonal
Immunogen:	The immunogen for anti-MAP3K14 antibody: synthetic peptide directed towards the N terminal of human MAP3K14. Synthetic peptide located within the following region: SEAGPAAISIIAQAECEFSPTFSERIFIAGSKQYSQSESLDQIPNN
Formulation:	Liquid. Purified antibody supplied in 1x PBS buffer with 0.09% (w/v) sodium azide and 2% sucrose. <i>Note that this product is shipped as lyophilized powder to China customers.</i>
Purification:	Affinity Purified
Conjugation:	Unconjugated
Storage:	Store at -20°C as received.
Stability:	Stable for 12 months from date of receipt.
Predicted Protein Size:	104 kDa
Gene Name:	mitogen-activated protein kinase kinase kinase 14
Database Link:	NP_003945 Entrez Gene 9020 Human Q99558
Background:	This gene encodes mitogen-activated protein kinase kinase kinase 14, which is a serine/threonine protein-kinase. This kinase binds to TRAF2 and stimulates NF-kappaB activity. It shares sequence similarity with several other MAPKK kinases. It participates in an NF-kappaB-inducing signalling cascade common to receptors of the tumour-necrosis/nerve-growth factor (TNF/NGF) family and to the interleukin-1 type-I receptor.
Synonyms:	FTDCR1B; HS; HSNIK; NIK



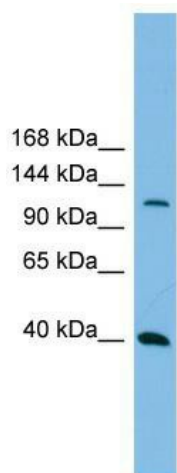
[View online »](#)

Note: Immunogen Sequence Homology: Dog: 100%; Pig: 100%; Rat: 100%; Horse: 100%; Human: 100%; Mouse: 100%; Bovine: 100%; Rabbit: 100%; Guinea pig: 93%

Protein Families: Druggable Genome, Protein Kinase

Protein Pathways: Apoptosis, Epithelial cell signaling in Helicobacter pylori infection, MAPK signaling pathway, T cell receptor signaling pathway

Product images:



WB Suggested Anti-MAP3K14 Antibody Titration:
0.2-1 ug/ml; ELISA Titer: 1: 312500; Positive
Control: THP-1 cell lysate