

## Product datasheet for **TA346366**

### MTMR1 Rabbit Polyclonal Antibody

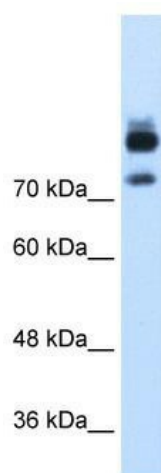
#### Product data:

Product Type:	Primary Antibodies
Applications:	WB
Recommended Dilution:	WB
Reactivity:	Human
Host:	Rabbit
Isotype:	IgG
Clonality:	Polyclonal
Immunogen:	The immunogen for anti-MTMR1 antibody: synthetic peptide directed towards the C terminal of human MTMR1. Synthetic peptide located within the following region: KEDVYTKTISLWSYINSQLDEFSNPFFVNYENHVLYPVASLSHLELWVNY
Formulation:	Liquid. Purified antibody supplied in 1x PBS buffer with 0.09% (w/v) sodium azide and 2% sucrose. <i>Note that this product is shipped as lyophilized powder to China customers.</i>
Purification:	Protein A purified
Conjugation:	Unconjugated
Storage:	Store at -20°C as received.
Stability:	Stable for 12 months from date of receipt.
Predicted Protein Size:	73 kDa
Gene Name:	myotubularin related protein 1
Database Link:	<a href="#">NP_003819</a> <a href="#">Entrez Gene 8776 Human</a> <a href="#">Q13613</a>
Background:	MTMR1 is a member of the myotubularin related family of proteins. Members of this family contain the consensus sequence for the active site of protein tyrosine phosphatases. This gene encodes a member of the myotubularin related family of proteins. Members of this family contain the consensus sequence for the active site of protein tyrosine phosphatases. Alternatively spliced variants have been described but their biological validity has not been determined.



[View online »](#)

<b>Synonyms:</b>	myotubularin-related protein 1; myotubularin related protein 1; OTTHUMP00000025864
<b>Note:</b>	Immunogen Sequence Homology: Pig: 100%; Rat: 100%; Horse: 100%; Human: 100%; Mouse: 100%; Bovine: 100%; Rabbit: 100%; Guinea pig: 100%; Dog: 93%
<b>Protein Families:</b>	Druggable Genome, Phosphatase
<b>Protein Pathways:</b>	Fructose and mannose metabolism, Metabolic pathways, Riboflavin metabolism, Thiamine metabolism

**Product images:**

WB Suggested Anti-MTMR1 Antibody Titration:  
1.25 ug/ml; Positive Control: HepG2 cell lysate