

## Product datasheet for **TA346365**

### SOCS1 Rabbit Polyclonal Antibody

#### Product data:

Product Type:	Primary Antibodies
Applications:	WB
Recommended Dilution:	WB
Reactivity:	Rat, Human
Host:	Rabbit
Isotype:	IgG
Clonality:	Polyclonal
Immunogen:	The immunogen for anti-SOCS1 antibody: synthetic peptide directed towards the middle region of human SOCS1. Synthetic peptide located within the following region: RQRNCFALSVMASGPTSIRVHFQAGRFHLDGSRESFDCLFELLEHYVA
Formulation:	Liquid. Purified antibody supplied in 1x PBS buffer with 0.09% (w/v) sodium azide and 2% sucrose. <i>Note that this product is shipped as lyophilized powder to China customers.</i>
Purification:	Affinity Purified
Conjugation:	Unconjugated
Storage:	Store at -20°C as received.
Stability:	Stable for 12 months from date of receipt.
Predicted Protein Size:	23 kDa
Gene Name:	suppressor of cytokine signaling 1
Database Link:	<a href="#">NP_003736</a> <a href="#">Entrez Gene 252971 RatEntrez Gene 8651 Human O15524</a>
Background:	SOCS1 is a member of the STAT-induced STAT inhibitor (SSI), also known as suppressor of cytokine signaling (SOCS), family. SSI family members are cytokine-inducible negative regulators of cytokine signaling. SOCS1 functions downstream of cytokine receptors, and takes part in a negative feedback loop to attenuate cytokine signaling. Knockout studies in mice suggested the role of its gene as a modulator of IFN-gamma action, which is required for normal postnatal growth and survival.



[View online »](#)

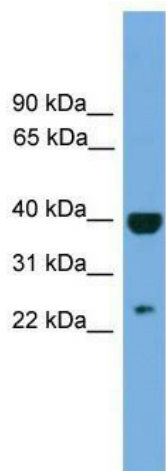
**Synonyms:** CIS1; CISH1; JAB; SOCS-1; SSI-1; SSI1; TIP3

**Note:** Immunogen Sequence Homology: Dog: 100%; Pig: 100%; Rat: 100%; Horse: 100%; Human: 100%; Mouse: 100%; Bovine: 100%; Rabbit: 100%; Guinea pig: 100%

**Protein Families:** Druggable Genome, Stem cell - Pluripotency, Stem cell relevant signaling - JAK/STAT signaling pathway

**Protein Pathways:** Insulin signaling pathway, Jak-STAT signaling pathway, Type II diabetes mellitus, Ubiquitin mediated proteolysis

### Product images:



WB Suggested Anti-SOCS1 Antibody Titration: 0.2-1 ug/ml; ELISA Titer: 1: 312500; Positive Control: ACHN cell lysate