

Product datasheet for **TA346364**

SOCS1 Rabbit Polyclonal Antibody

Product data:

Product Type:	Primary Antibodies
Applications:	IHC, WB
Recommended Dilution:	WB, IHC
Reactivity:	Rat, Human, Mouse
Host:	Rabbit
Isotype:	IgG
Clonality:	Polyclonal
Immunogen:	The immunogen for anti-SOCS1 antibody: synthetic peptide directed towards the N terminal of human SOCS1. Synthetic peptide located within the following region: RRPEPSSSSSSPAAPARPRPCPAVPAPAPGDTHFRTFRSHADYRRITRA
Formulation:	Liquid. Purified antibody supplied in 1x PBS buffer with 0.09% (w/v) sodium azide and 2% sucrose. <i>Note that this product is shipped as lyophilized powder to China customers.</i>
Purification:	Protein A purified
Conjugation:	Unconjugated
Storage:	Store at -20°C as received.
Stability:	Stable for 12 months from date of receipt.
Predicted Protein Size:	23 kDa
Gene Name:	suppressor of cytokine signaling 1
Database Link:	NP_003736 Entrez Gene 12703 Mouse Entrez Gene 252971 Rat Entrez Gene 8651 Human O15524



[View online »](#)

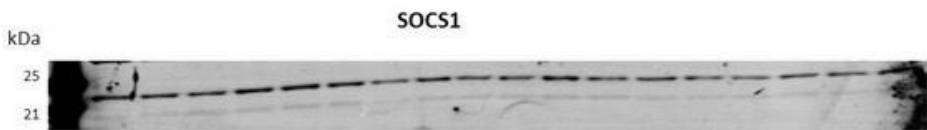
Background: SOCS1 is a member of the STAT-induced STAT inhibitor (SSI), also known as suppressor of cytokine signaling (SOCS), family. SSI family members are cytokine-inducible negative regulators of cytokine signaling. SOCS1 functions downstream of cytokine receptors, and takes part in a negative feedback loop to attenuate cytokine signaling. Knockout studies in mice suggested the role of its gene as a modulator of IFN-gamma action, which is required for normal postnatal growth and survival. This gene encodes a member of the STAT-induced STAT inhibitor (SSI), also known as suppressor of cytokine signaling (SOCS), family. SSI family members are cytokine-inducible negative regulators of cytokine signaling. The expression of this gene can be induced by a subset of cytokines, including IL2, IL3 erythropoietin (EPO), CSF2/GM-CSF, and interferon (IFN)-gamma. The protein encoded by this gene functions downstream of cytokine receptors, and takes part in a negative feedback loop to attenuate cytokine signaling. Knockout studies in mice suggested the role of this gene as a modulator of IFN-gamma action, which is required for normal postnatal growth and survival.

Synonyms: CIS1; CISH1; JAB; SOCS-1; SSI-1; SSI1; TIP3

Note: Immunogen Sequence Homology: Pig: 100%; Rat: 100%; Human: 100%; Mouse: 100%; Bovine: 100%; Rabbit: 100%; Guinea pig: 93%; Dog: 92%; Horse: 90%

Protein Families: Druggable Genome, Stem cell - Pluripotency, Stem cell relevant signaling - JAK/STAT signaling pathway

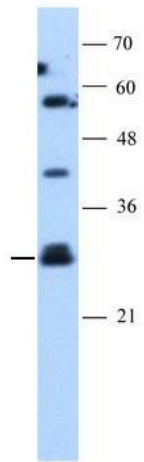
Protein Pathways: Insulin signaling pathway, Jak-STAT signaling pathway, Type II diabetes mellitus, Ubiquitin mediated proteolysis

Product images:


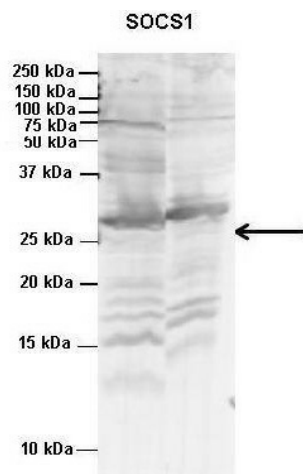
SOCS1 antibody - N-terminal region validated by WB using Huh7 Cells transfected with microRNA at 1: 1000.



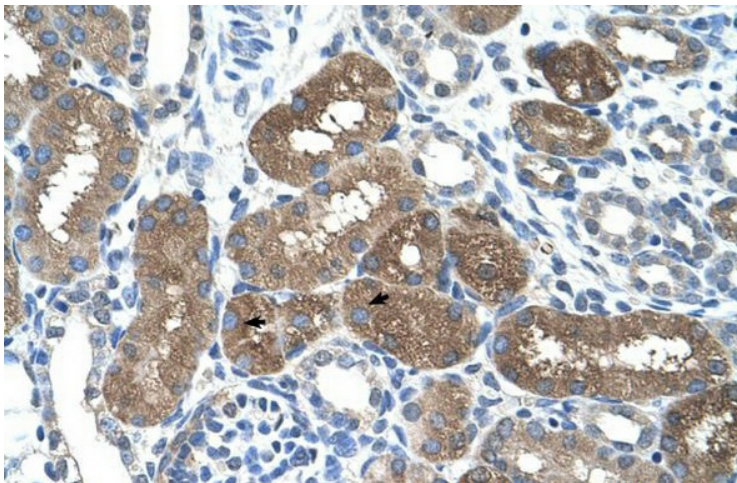
SOCS1 antibody - N-terminal region validated by WB using Jurkat cell lysate at 0.2-1 ug/ml.



WB Suggested Anti-SOCS1 Antibody Titration:
1.25 ug/ml; Sample Type: Jurkat Lysate
(20ug) Sample Type: Jurkat cell lysate



Lanes: 1. Mouse WT brain extract (80ug) 2. Rat brain extract (80ug); Primary Antibody Dilution: 2 ug/ml; Secondary Antibody: IRDye 800CW goat anti-rabbit from Li-COR Bioscience; Secondary Antibody Dilution: 1: 20, 000; Gene Name: SOCS1;



Rabbit Anti-SOCS1 Antibody; Paraffin Embedded Tissue: Human Kidney; Cellular Data: Epithelial cells of renal tubule; Antibody Concentration: 4.0-8.0 ug/ml; Magnification: 400X