

Product datasheet for **TA346359**

PPFIBP1 Rabbit Polyclonal Antibody

Product data:

Product Type:	Primary Antibodies
Applications:	WB
Recommended Dilution:	WB
Reactivity:	Human
Host:	Rabbit
Isotype:	IgG
Clonality:	Polyclonal
Immunogen:	The immunogen for anti-PPFIBP1 antibody: synthetic peptide directed towards the N terminal of human PPFIBP1. Synthetic peptide located within the following region: PFMGSLRALHLVEDLRGLLEMMETDEKEGLRCQIPDSTAETLVEWLQSQM
Formulation:	Liquid. Purified antibody supplied in 1x PBS buffer with 0.09% (w/v) sodium azide and 2% sucrose.
Purification:	Protein A purified
Conjugation:	Unconjugated
Storage:	Store at -20°C as received.
Stability:	Stable for 12 months from date of receipt.
Predicted Protein Size:	19 kDa
Gene Name:	PPFIA binding protein 1
Database Link:	NP_803193 Entrez Gene 8496 Human Q86W92

[View online »](#)

Background:

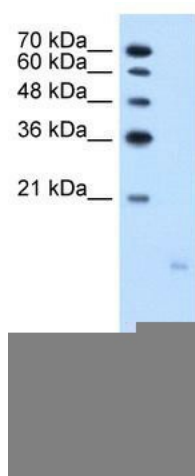
PPFIBP1 is a member of the LAR protein-tyrosine phosphatase-interacting protein (liprin) family. Liprins interact with members of LAR family of transmembrane protein tyrosine phosphatases, which are known to be important for axon guidance and mammary gland development. It has been proposed that liprins are multivalent proteins that form complex structures and act as scaffolds for the recruitment and anchoring of LAR family of tyrosine phosphatases. This protein was found to interact with S100A4, a calcium-binding protein related to tumor invasiveness and metastasis. The protein encoded by this gene is a member of the LAR protein-tyrosine phosphatase-interacting protein (liprin) family. Liprins interact with members of LAR family of transmembrane protein tyrosine phosphatases, which are known to be important for axon guidance and mammary gland development. It has been proposed that liprins are multivalent proteins that form complex structures and act as scaffolds for the recruitment and anchoring of LAR family of tyrosine phosphatases. This protein was found to interact with S100A4, a calcium-binding protein related to tumor invasiveness and metastasis. In vitro experiment demonstrated that the interaction inhibited the phosphorylation of this protein by protein kinase C and protein kinase CK2. Alternatively spliced transcript variants encoding distinct isoforms have been reported.

Synonyms:

hSGT2; hSGt2p; L2; SGT2

Note:

Immunogen Sequence Homology: Pig: 100%; Rat: 100%; Horse: 100%; Human: 100%; Mouse: 100%; Bovine: 100%; Rabbit: 100%; Dog: 93%; Guinea pig: 93%; Zebrafish: 79%

Product images:


WB Suggested Anti-PPFIBP1 Antibody Titration:
2.5 ug/ml; Positive Control: Jurkat cell lysate