

## Product datasheet for **TA346355**

### Uridine Phosphorylase 1 (UPP1) Rabbit Polyclonal Antibody

#### Product data:

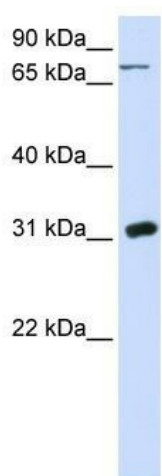
Product Type:	Primary Antibodies
Applications:	WB
Recommended Dilution:	WB
Reactivity:	Human
Host:	Rabbit
Isotype:	IgG
Clonality:	Polyclonal
Immunogen:	The immunogen for anti-UPP1 antibody: synthetic peptide directed towards the N terminal of human UPP1. Synthetic peptide located within the following region: AATGANAEKAESHNDPCVRLLNPNIAKMKEDILYHFNLTTSRHNFALFG
Formulation:	Liquid. Purified antibody supplied in 1x PBS buffer with 0.09% (w/v) sodium azide and 2% sucrose. <i>Note that this product is shipped as lyophilized powder to China customers.</i>
Purification:	Affinity Purified
Conjugation:	Unconjugated
Storage:	Store at -20°C as received.
Stability:	Stable for 12 months from date of receipt.
Predicted Protein Size:	34 kDa
Gene Name:	uridine phosphorylase 1
Database Link:	<a href="#">NP_003355</a> <a href="#">Entrez Gene 7378 Human</a> <a href="#">Q16831</a>
Background:	UPP1 catalyzes the reversible phosphorylytic cleavage of uridine and deoxyuridine to uracil and ribose- or deoxyribose-1-phosphate. The produced molecules are then utilized as carbon and energy sources or in the rescue of pyrimidine bases for nucleotide synthesis.
Synonyms:	UDRPASE; UP; UPASE; UPP
Note:	Immunogen Sequence Homology: Human: 100%; Rat: 85%; Mouse: 85%; Bovine: 85%; Horse: 83%; Zebrafish: 83%; Pig: 75%; Guinea pig: 75%



[View online »](#)

Protein Pathways: Drug metabolism - other enzymes, Metabolic pathways, Pyrimidine metabolism

### Product images:



WB Suggested Anti-UPP1 Antibody Titration: 0.2-1 ug/ml; ELISA Titer: 1: 62500; Positive Control: 293T cell lysate