

## Product datasheet for **TA346349**

### Transglutaminase 3 (TGM3) Rabbit Polyclonal Antibody

#### Product data:

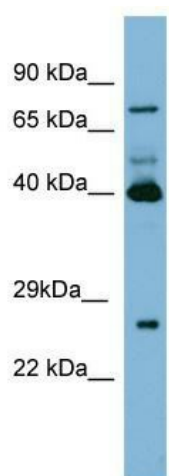
Product Type:	Primary Antibodies
Applications:	WB
Recommended Dilution:	WB
Reactivity:	Human
Host:	Rabbit
Isotype:	IgG
Clonality:	Polyclonal
Immunogen:	The immunogen for anti-TGM3 antibody: synthetic peptide directed towards the N terminal of human TGM3. Synthetic peptide located within the following region: MAALGVQSINWQTAFNRAHHTDKFSSQELILRRGQNFQVLMIMNKGLGS
Formulation:	Liquid. Purified antibody supplied in 1x PBS buffer with 0.09% (w/v) sodium azide and 2% sucrose. <i>Note that this product is shipped as lyophilized powder to China customers.</i>
Purification:	Affinity Purified
Conjugation:	Unconjugated
Storage:	Store at -20°C as received.
Stability:	Stable for 12 months from date of receipt.
Predicted Protein Size:	77 kDa
Gene Name:	transglutaminase 3
Database Link:	<a href="#">NP_003236</a> <a href="#">Entrez Gene 7053 Human</a> <a href="#">Q08188</a>
Background:	Transglutaminases are enzymes that catalyze the crosslinking of proteins by epsilon-gamma glutamyl lysine isopeptide bonds. While the primary structure of transglutaminases is not conserved, they all have the same amino acid sequence at their active sites
Synonyms:	TGE
Note:	Immunogen Sequence Homology: Human: 100%; Dog: 86%; Rat: 86%; Mouse: 86%; Rabbit: 85%



[View online »](#)

Protein Families: Druggable Genome

### Product images:



WB Suggested Anti-TGM3 Antibody Titration: 0.2-1 ug/ml; ELISA Titer: 1: 62500; Positive Control: PANC1 cell lysate