

Product datasheet for **TA346347**

LEFTY2 Rabbit Polyclonal Antibody

Product data:

Product Type:	Primary Antibodies
Applications:	WB
Recommended Dilution:	WB
Reactivity:	Human
Host:	Rabbit
Isotype:	IgG
Clonality:	Polyclonal
Immunogen:	The immunogen for Anti-LEFTY2 antibody is: synthetic peptide directed towards the N-terminal region of Human LEFTY2. Synthetic peptide located within the following region: AGPGAALTEEQLLGSLLRQLQLSEVPVLDRADMEKLVIPAHVRAQYVLL
Formulation:	Liquid. Purified antibody supplied in 1x PBS buffer with 0.09% (w/v) sodium azide and 2% sucrose. <i>Note that this product is shipped as lyophilized powder to China customers.</i>
Purification:	Affinity Purified
Conjugation:	Unconjugated
Storage:	Store at -20°C as received.
Stability:	Stable for 12 months from date of receipt.
Predicted Protein Size:	40 kDa
Gene Name:	left-right determination factor 2
Database Link:	NP_003231 Entrez Gene 7044 Human O00292
Background:	LEFTY2 is a member of the TGF-beta family of proteins. The protein is secreted and plays a role in left-right asymmetry determination of organ systems during development. The protein may also play a role in endometrial bleeding. Mutations in its gene have been associated with left-right axis malformations, particularly in the heart and lungs. Some types of infertility have been associated with dysregulated expression of its gene in the endometrium.
Synonyms:	EBAF; LEFTA; LEFTYA; TGFB4



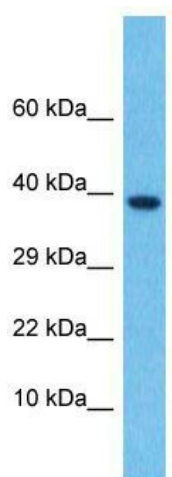
[View online »](#)

Note: Immunogen Sequence Homology: Human: 100%; Dog: 83%; Rat: 83%; Pig: 77%

Protein Families: Druggable Genome, Secreted Protein

Protein Pathways: TGF-beta signaling pathway

Product images:



Host: Rabbit; Target Name: LEFTY2; Sample
Tissue: Thymus Tumor lysates; Antibody Dilution:
1.0 ug/ml