

## Product datasheet for **TA346346**

### LEFTY2 Rabbit Polyclonal Antibody

#### Product data:

Product Type:	Primary Antibodies
Applications:	IHC, WB
Recommended Dilution:	WB, IHC
Reactivity:	Human
Host:	Rabbit
Isotype:	IgG
Clonality:	Polyclonal
Immunogen:	The immunogen for anti-LEFTY2 antibody: synthetic peptide directed towards the N terminal of human LEFTY2. Synthetic peptide located within the following region: MWPLWLCWALWVPLAGPGAALTEEQLLGSLLRQLQLSEVPVLDRADMEK
Formulation:	Liquid. Purified antibody supplied in 1x PBS buffer with 0.09% (w/v) sodium azide and 2% sucrose. <i>Note that this product is shipped as lyophilized powder to China customers.</i>
Purification:	Affinity Purified
Conjugation:	Unconjugated
Storage:	Store at -20°C as received.
Stability:	Stable for 12 months from date of receipt.
Predicted Protein Size:	40 kDa
Gene Name:	left-right determination factor 2
Database Link:	<a href="#">NP_003231</a> <a href="#">Entrez Gene 7044 Human</a> <a href="#">O00292</a>



[View online »](#)

**Background:**

LEFTY2 is a member of the TGF-beta family of proteins. The protein is secreted and plays a role in left-right asymmetry determination of organ systems during development. The protein may also play a role in endometrial bleeding. Mutations in its gene have been associated with left-right axis malformations, particularly in the heart and lungs. Some types of infertility have been associated with dysregulated expression of its gene in the endometrium. This gene encodes a member of the TGF-beta family of proteins. The encoded protein is secreted and plays a role in left-right asymmetry determination of organ systems during development. The protein may also play a role in endometrial bleeding. Mutations in this gene have been associated with left-right axis malformations, particularly in the heart and lungs. Some types of infertility have been associated with dysregulated expression of this gene in the endometrium. Alternative processing of this protein can yield three different products. This gene is closely linked to both a related family member and a related pseudogene.

**Synonyms:**

EBAF; LEFTA; LEFTYA; TGFB4

**Note:**

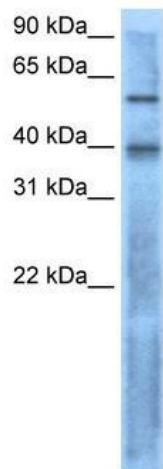
Immunogen Sequence Homology: Human: 100%; Horse: 93%; Pig: 86%; Rat: 83%; Mouse: 79%; Bovine: 79%

**Protein Families:**

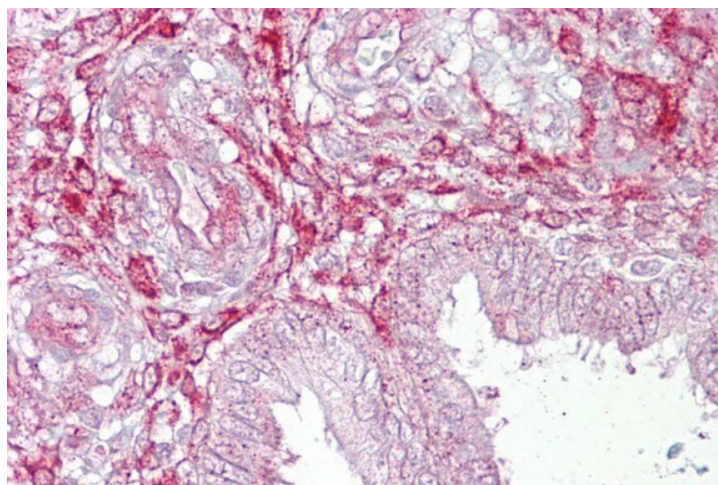
Druggable Genome, Secreted Protein

**Protein Pathways:**

TGF-beta signaling pathway

**Product images:**

WB Suggested Anti-LEFTY2 Antibody Titration: 0.2-1 ug/ml; Positive Control: RPMI 8226 cell lysate. LEFTY2 is supported by BioGPS gene expression data to be expressed in RPMI 8226



Immunohistochemistry with Uterus tissue at an antibody concentration of 5 ug/ml using anti-LEFTY2 antibody