

Product datasheet for **TA346345**

Stc1 Rabbit Polyclonal Antibody

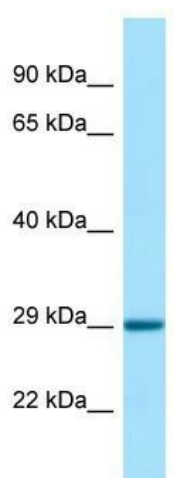
Product data:

Product Type:	Primary Antibodies
Applications:	WB
Recommended Dilution:	WB
Reactivity:	Mouse, Rat
Host:	Rabbit
Isotype:	IgG
Clonality:	Polyclonal
Immunogen:	The immunogen for Anti-Stc1 antibody is: synthetic peptide directed towards the C-terminal region of Rat Stc1. Synthetic peptide located within the following region: EKIGPNMASLFHILQTDHCAQTHPRADFNRRTNEPQKLKVLRLNLRGEG
Formulation:	Liquid. Purified antibody supplied in 1x PBS buffer with 0.09% (w/v) sodium azide and 2% sucrose. <i>Note that this product is shipped as lyophilized powder to China customers.</i>
Purification:	Affinity Purified
Conjugation:	Unconjugated
Storage:	Store at -20°C as received.
Stability:	Stable for 12 months from date of receipt.
Predicted Protein Size:	27 kDa
Gene Name:	stanniocalcin 1
Database Link:	NP_112385 Entrez Gene 20855 Mouse Entrez Gene 81801 Rat P97574
Background:	Stc1 is a calcium/phosphate-regulating protein and is involved in stimulating osteoblast differentiation.
Synonyms:	STC; STC-1
Note:	Immunogen Sequence Homology: Rat: 100%; Horse: 100%; Human: 100%; Mouse: 100%; Dog: 93%; Pig: 93%; Bovine: 93%; Rabbit: 93%; Guinea pig: 79%



[View online »](#)

Product images:



WB Suggested Anti-Stc1 Antibody; Titration: 1.0 ug/ml; Positive Control: Rat Pancreas