

Product datasheet for **TA346342**

Squalene Epoxidase (SQLE) Rabbit Polyclonal Antibody

Product data:

Product Type:	Primary Antibodies
Applications:	IHC, WB
Recommended Dilution:	WB, IHC
Reactivity:	Human
Host:	Rabbit
Isotype:	IgG
Clonality:	Polyclonal
Immunogen:	The immunogen for anti-SQLE antibody: synthetic peptide directed towards the C terminal of human SQLE. Synthetic peptide located within the following region: KKSFYWARKTSHSFVNNILAQALYELFSATDDSLHQLRKACFLYFKLGGE
Formulation:	Liquid. Purified antibody supplied in 1x PBS buffer with 0.09% (w/v) sodium azide and 2% sucrose. <i>Note that this product is shipped as lyophilized powder to China customers.</i>
Purification:	Affinity Purified
Conjugation:	Unconjugated
Storage:	Store at -20°C as received.
Stability:	Stable for 12 months from date of receipt.
Predicted Protein Size:	39 kDa
Gene Name:	squalene epoxidase
Database Link:	NP_003120 Entrez Gene 6713 Human Q14534
Background:	Squalene epoxidase catalyzes the first oxygenation step in sterol biosynthesis and is thought to be one of the rate-limiting enzymes in this pathway.
Synonyms:	FLJ30795
Note:	Immunogen Sequence Homology: Human: 100%; Mouse: 100%; Sheep: 100%; Bovine: 100%; Rabbit: 100%; Dog: 93%; Pig: 93%; Rat: 93%; Horse: 86%; Zebrafish: 86%; Guinea pig: 86%

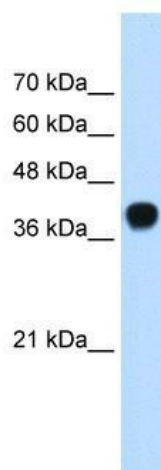


[View online »](#)

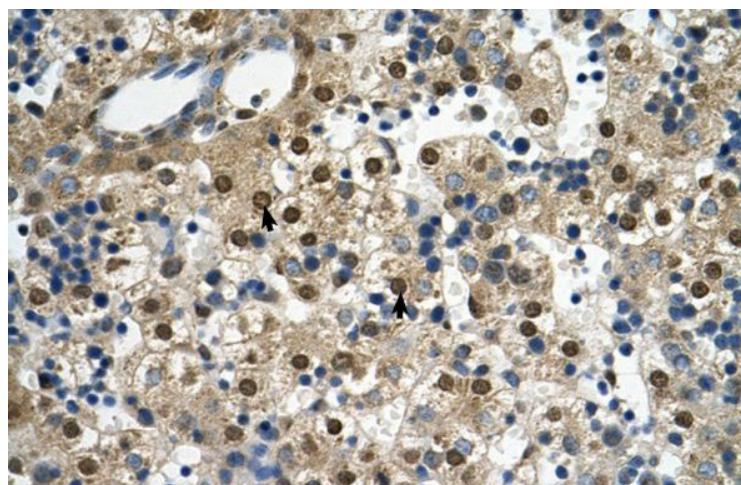
Protein Families: Druggable Genome, Transmembrane

Protein Pathways: Metabolic pathways, Steroid biosynthesis

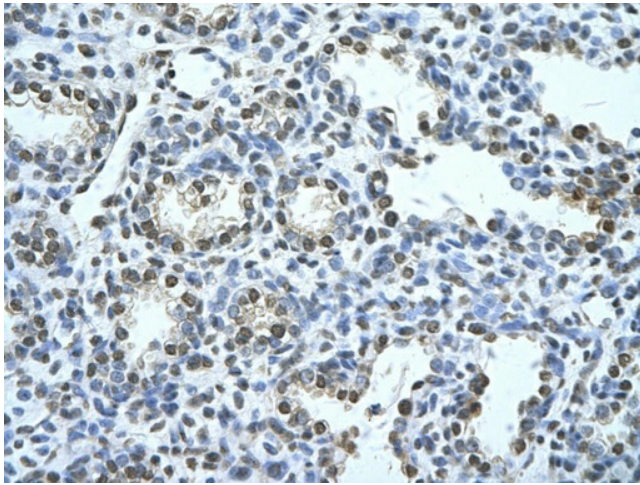
Product images:



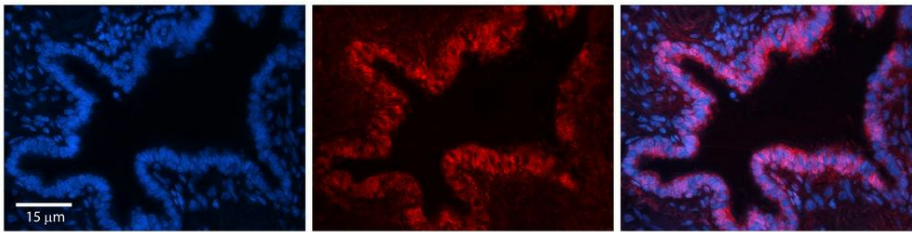
WB Suggested Anti-SQLE Antibody Titration: 0.25 ug/ml
Positive Control: 721_B cell lysate. SQLE is strongly supported by BioGPS gene expression data to be expressed in Human 721_B cells



Rabbit Anti-SQLE Antibody; Paraffin Embedded Tissue: Human Liver; Cellular Data: Hepatocytes; Antibody Concentration: 4.0-8.0 ug/ml; Magnification: 400X



Rabbit Anti-SQLE Antibody; Paraffin Embedded Tissue: Human renal cell; Cellular Data: Epithelial cells of renal tubule; Antibody Concentration: 4.0-8.0 ug/ml; Magnification: 400X



Rabbit Anti-SQLE Antibody; Formalin Fixed Paraffin Embedded Tissue: Human Bronchial Epithelial Tissue; Observed Staining: Cytoplasmic; Primary Antibody Concentration: 1: 100; Other Working Concentrations: 1/600; Secondary Antibody: Donkey anti-Rabbit-Cy3; Secondary Antibody Concentration: 1: 200; Magnification: 20X; Exposure Time: 0.5-2.0 sec;