

Product datasheet for **TA346340**

Semenogelin II (SEMG2) Rabbit Polyclonal Antibody

Product data:

Product Type:	Primary Antibodies
Applications:	WB
Recommended Dilution:	WB
Reactivity:	Human
Host:	Rabbit
Isotype:	IgG
Clonality:	Polyclonal
Immunogen:	The immunogen for anti-SEMG2 antibody: synthetic peptide directed towards the N terminal of human SEMG2. Synthetic peptide located within the following region: GQKGQHYFGQKDQQHTKSKGSFSIQHTYHVDINDHDWTRKSQQYDLNALH
Formulation:	Liquid. Purified antibody supplied in 1x PBS buffer with 0.09% (w/v) sodium azide and 2% sucrose. <i>Note that this product is shipped as lyophilized powder to China customers.</i>
Purification:	Affinity Purified
Conjugation:	Unconjugated
Storage:	Store at -20°C as received.
Stability:	Stable for 12 months from date of receipt.
Predicted Protein Size:	63 kDa
Gene Name:	semenogelin II
Database Link:	NP_002999 Entrez Gene 6407 Human Q02383
Background:	The secreted protein encoded by this gene is involved in the formation of a gel matrix that encases ejaculated spermatozoa. Proteolysis by the prostate-specific antigen (PSA) breaks down the gel matrix and allows the spermatozoa to move more freely. The encoded protein is found in lesser abundance than a similar semenogelin protein. The genes encoding these two semenogelin proteins are found in a cluster on chromosome 20.
Synonyms:	SGII

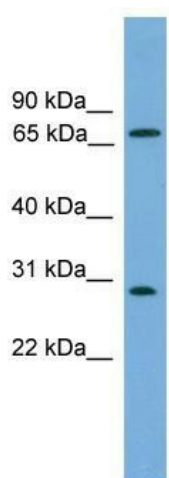


[View online »](#)

Note: Immunogen Sequence Homology: Human: 100%; Pig: 86%

Protein Families: Secreted Protein

Product images:



WB Suggested Anti-SEMG2 Antibody Titration:
0.2-1 ug/ml; ELISA Titer: 1: 312500; Positive
Control: COLO205 cell lysate