

## Product datasheet for **TA346337**

### Semenogelin I (SEMG1) Rabbit Polyclonal Antibody

#### Product data:

Product Type:	Primary Antibodies
Applications:	IHC, WB
Recommended Dilution:	WB, IHC
Reactivity:	Human
Host:	Rabbit
Isotype:	IgG
Clonality:	Polyclonal
Immunogen:	The immunogen for anti-SEMG1 antibody: synthetic peptide directed towards the N terminal of human SEMG1. Synthetic peptide located within the following region: QKKGQQTESKGSFSIQTYHVDANDHDQSRKSQQYDLNALHKTTKSQRHL
Formulation:	Liquid. Purified antibody supplied in 1x PBS buffer with 0.09% (w/v) sodium azide and 2% sucrose. <i>Note that this product is shipped as lyophilized powder to China customers.</i>
Purification:	Protein A purified
Conjugation:	Unconjugated
Storage:	Store at -20°C as received.
Stability:	Stable for 12 months from date of receipt.
Predicted Protein Size:	51 kDa
Gene Name:	semenogelin I
Database Link:	<a href="#">NP_002998</a> <a href="#">Entrez Gene 6406 Human</a> <a href="#">P04279</a>



[View online »](#)

**Background:**

SEMG1 is the predominant protein in semen. The secreted protein is involved in the formation of a gel matrix that encases ejaculated spermatozoa. The prostate-specific antigen (PSA) protease processes this protein into smaller peptides, with each possibly having a separate function. The proteolysis process breaks down the gel matrix and allows the spermatozoa to move more freely. The protein encoded by this gene is the predominant protein in semen. The encoded secreted protein is involved in the formation of a gel matrix that encases ejaculated spermatozoa. The prostate-specific antigen (PSA) protease processes this protein into smaller peptides, with each possibly having a separate function. The proteolysis process breaks down the gel matrix and allows the spermatozoa to move more freely. Two transcript variants encoding different isoforms have been found for this gene.

**Synonyms:**

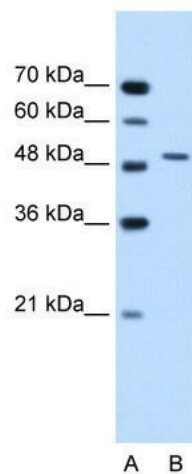
CT103; dj172H20.2; SEMG; SGI

**Note:**

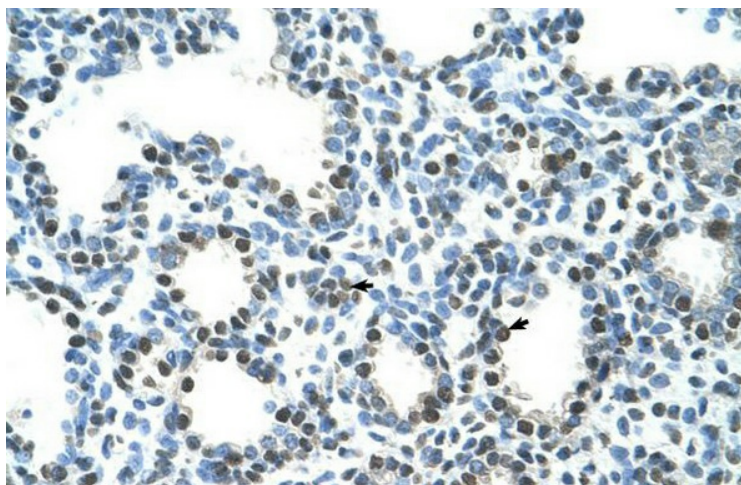
Immunogen Sequence Homology: Human: 100%; Pig: 86%

**Protein Families:**

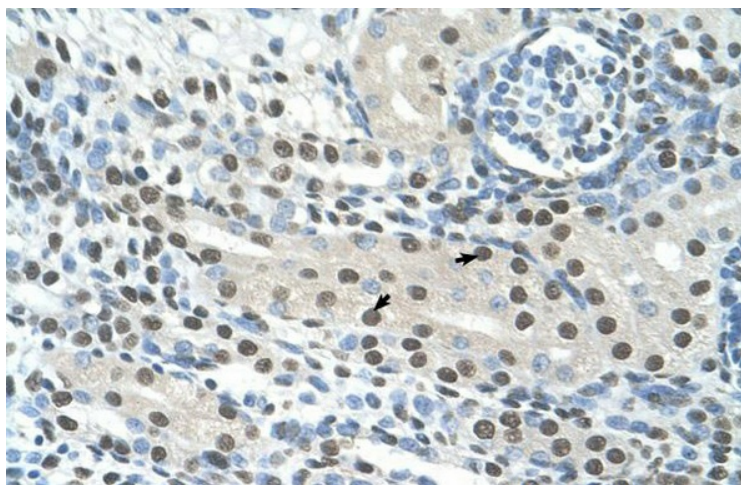
Secreted Protein

**Product images:**

WB Suggested Anti-SEMG1 Antibody Titration:  
1.25 ug/ml; Positive Control: Jurkat cell lysate



Rabbit Anti-SEMG1 Antibody; Paraffin Embedded Tissue: Human Lung; Cellular Data: Alveolar cells; Antibody Concentration: 4.0-8.0 ug/ml; Magnification: 400X



Rabbit Anti-SEMG1 Antibody; Paraffin Embedded Tissue: Human Kidney; Cellular Data: Epithelial cells of renal tubule; Antibody Concentration: 4.0-8.0 ug/ml; Magnification: 400X