

Product datasheet for **TA346336**

SERPINB4 Rabbit Polyclonal Antibody

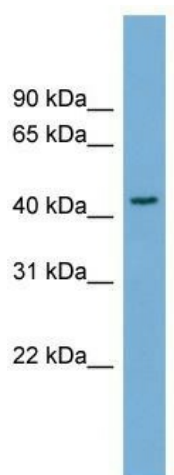
Product data:

Product Type:	Primary Antibodies
Applications:	WB
Recommended Dilution:	WB
Reactivity:	Human
Host:	Rabbit
Isotype:	IgG
Clonality:	Polyclonal
Immunogen:	The immunogen for anti-SERPINB4 antibody: synthetic peptide directed towards the N terminal of human SERPINB4. Synthetic peptide located within the following region: TSALGMVLLGAKDNTAQQISKVLHFDQVTENTTEKAATYHVDRSGNVHHQ
Formulation:	Liquid. Purified antibody supplied in 1x PBS buffer with 0.09% (w/v) sodium azide and 2% sucrose. <i>Note that this product is shipped as lyophilized powder to China customers.</i>
Purification:	Affinity Purified
Conjugation:	Unconjugated
Storage:	Store at -20°C as received.
Stability:	Stable for 12 months from date of receipt.
Predicted Protein Size:	45
Gene Name:	serpin family B member 4
Database Link:	NP_002965 Entrez Gene 6318 Human P48594
Background:	SERPINB4 may act as a protease inhibitor to modulate the host immune response against tumor cells.
Synonyms:	LEUPIN; PI11; SCCA-2; SCCA1; SCCA2
Note:	Immunogen Sequence Homology: Human: 100%; Rabbit: 90%
Protein Families:	Druggable Genome, Secreted Protein



[View online »](#)

Product images:



WB Suggested Anti-SERPINB4 Antibody Titration:
0.2-1 ug/ml; Positive Control: HepG2 cell lysate