

## Product datasheet for TA346332

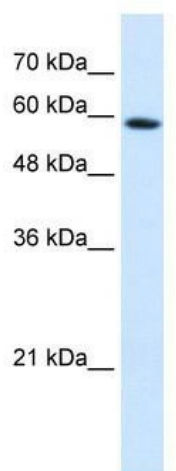
### PSG9 Rabbit Polyclonal Antibody

#### Product data:

Product Type:	Primary Antibodies
Applications:	WB
Recommended Dilution:	WB
Reactivity:	Human
Host:	Rabbit
Isotype:	IgG
Clonality:	Polyclonal
Immunogen:	The immunogen for anti-PSG9 antibody: synthetic peptide directed towards the N terminal of human PSG9. Synthetic peptide located within the following region: YSNASLLIQNVTRKDAGTYTLHIIKRGDETREEIRHFTFTLYLETPKPYI
Formulation:	Liquid. Purified antibody supplied in 1x PBS buffer with 0.09% (w/v) sodium azide and 2% sucrose. <i>Note that this product is shipped as lyophilized powder to China customers.</i>
Purification:	Affinity Purified
Conjugation:	Unconjugated
Storage:	Store at -20°C as received.
Stability:	Stable for 12 months from date of receipt.
Predicted Protein Size:	54 kDa
Gene Name:	pregnancy specific beta-1-glycoprotein 9
Database Link:	<a href="#">NP_002775</a> <a href="#">Entrez Gene 5678 Human</a> <a href="#">Q00887</a>
Background:	The function remains unknown.
Synonyms:	PS34; PSBG-9; PSBG-11; PSG11; PSGII
Note:	Immunogen Sequence Homology: Human: 100%
Protein Families:	Secreted Protein



[View online »](#)

**Product images:**

WB Suggested Anti-PSG9 Antibody Titration: 0.2-1 ug/ml; Positive Control: HepG2 cell lysate