

Product datasheet for **TA346329**

Periplakin (PPL) Rabbit Polyclonal Antibody

Product data:

Product Type:	Primary Antibodies
Applications:	WB
Recommended Dilution:	WB
Reactivity:	Human
Host:	Rabbit
Isotype:	IgG
Clonality:	Polyclonal
Immunogen:	The immunogen for anti-PPL antibody: synthetic peptide directed towards the middle region of human PPL. Synthetic peptide located within the following region: EKSRAQEKVTEKEVVKLQNDPQLEAEYQQLQEDHQDQDLREKQEEELSF
Formulation:	Liquid. Purified antibody supplied in 1x PBS buffer with 0.09% (w/v) sodium azide and 2% sucrose.
Purification:	Affinity Purified
Conjugation:	Unconjugated
Storage:	Store at -20°C as received.
Stability:	Stable for 12 months from date of receipt.
Predicted Protein Size:	205 kDa
Gene Name:	periplakin
Database Link:	NP_002696 Entrez Gene 5493 Human O60437



[View online »](#)

Background:

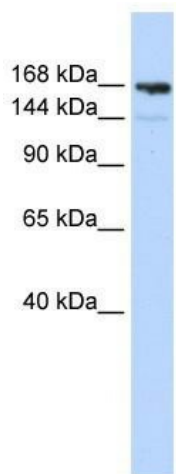
PPL is a component of desmosomes and of the epidermal cornified envelope in keratinocytes. The N-terminal domain of this protein interacts with the plasma membrane and its C-terminus interacts with intermediate filaments. Through its rod domain, this protein forms complexes with envoplakin. This protein may serve as a link between the cornified envelope and desmosomes as well as intermediate filaments. AKT1/PKB, a protein kinase mediating a variety of cell growth and survival signaling processes, is reported to interact with this protein, suggesting a possible role for this protein as a localization signal in AKT1-mediated signaling. The protein encoded by this gene is a component of desmosomes and of the epidermal cornified envelope in keratinocytes. The N-terminal domain of this protein interacts with the plasma membrane and its C-terminus interacts with intermediate filaments. Through its rod domain, this protein forms complexes with envoplakin. This protein may serve as a link between the cornified envelope and desmosomes as well as intermediate filaments. AKT1/PKB, a protein kinase mediating a variety of cell growth and survival signaling processes, is reported to interact with this protein, suggesting a possible role for this protein as a localization signal in AKT1-mediated signaling. Publication Note: This RefSeq record includes a subset of the publications that are available for this gene. Please see the Entrez Gene record to access additional publications.

Synonyms:

KIAA0568; MGC134872

Note:

Immunogen Sequence Homology: Human: 100%; Pig: 82%

Product images:

WB Suggested Anti-PPL Antibody Titration: 0.2-1 ug/ml; ELISA Titer: 1: 62500; Positive Control: MCF7 cell lysate. PPL is supported by BioGPS gene expression data to be expressed in MCF7