

## Product datasheet for **TA346328**

### Perilipin-1 (PLIN1) Rabbit Polyclonal Antibody

#### Product data:

Product Type:	Primary Antibodies
Applications:	WB
Recommended Dilution:	WB
Reactivity:	Human
Host:	Rabbit
Isotype:	IgG
Clonality:	Polyclonal
Immunogen:	The immunogen for anti-PLIN antibody: synthetic peptide directed towards the N terminal of human PLIN. Synthetic peptide located within the following region: STQFTAANELACRGLDHLEEKIPALQYPPEKIASSELKDTISTRRLRSARNS
Formulation:	Liquid. Purified antibody supplied in 1x PBS buffer with 0.09% (w/v) sodium azide and 2% sucrose. <i>Note that this product is shipped as lyophilized powder to China customers.</i>
Purification:	Protein A purified
Conjugation:	Unconjugated
Storage:	Store at -20°C as received.
Stability:	Stable for 12 months from date of receipt.
Predicted Protein Size:	57 kDa
Gene Name:	perilipin 1
Database Link:	<a href="#">NP_002657</a> <a href="#">Entrez Gene 5346 Human</a> <a href="#">O60240</a>



[View online »](#)

**Background:** PLIN coats lipid storage droplets in adipocytes, thereby protecting them until they can be broken down by hormone-sensitive lipase. The protein is the major cAMP-dependent protein kinase substrate in adipocytes and, when unphosphorylated, may play a role in the inhibition of lipolysis. The protein encoded by this gene coats lipid storage droplets in adipocytes, thereby protecting them until they can be broken down by hormone-sensitive lipase. The encoded protein is the major cAMP-dependent protein kinase substrate in adipocytes and, when unphosphorylated, may play a role in the inhibition of lipolysis.

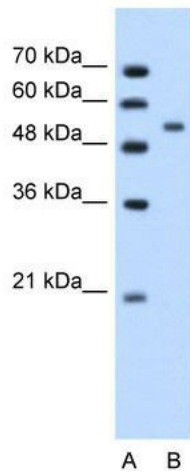
**Synonyms:** FPLD4; PERI; PLIN

**Note:** Immunogen Sequence Homology: Dog: 100%; Pig: 100%; Rat: 100%; Horse: 100%; Human: 100%; Mouse: 100%; Sheep: 100%; Bovine: 100%; Guinea pig: 100%; Zebrafish: 83%

**Protein Families:** Druggable Genome

**Protein Pathways:** PPAR signaling pathway

### Product images:



WB Suggested Anti-PLIN Antibody Titration: 1.25 ug/ml; Positive Control: Jurkat cell lysate