

Product datasheet for **TA346327**

MASPIN (SERPINB5) Rabbit Polyclonal Antibody

Product data:

Product Type:	Primary Antibodies
Applications:	IHC, WB
Recommended Dilution:	WB, IHC
Reactivity:	Human
Host:	Rabbit
Isotype:	IgG
Clonality:	Polyclonal
Immunogen:	The immunogen for anti-SERPINB5 antibody: synthetic peptide directed towards the middle region of human SERPINB5. Synthetic peptide located within the following region: NSVNDQTKILVNAAYFVGKWMKKFPESETKECPRLNKDTPVQMMNM
Formulation:	Liquid. Purified antibody supplied in 1x PBS buffer with 0.09% (w/v) sodium azide and 2% sucrose. <i>Note that this product is shipped as lyophilized powder to China customers.</i>
Purification:	Protein A purified
Conjugation:	Unconjugated
Storage:	Store at -20°C as received.
Stability:	Stable for 12 months from date of receipt.
Predicted Protein Size:	41 kDa
Gene Name:	serpin family B member 5
Database Link:	NP_002630 Entrez Gene 5268 Human P36952
Background:	As a tumor suppressor, it blocks the growth, invasion, and metastatic properties of mammary tumors. As it does not undergo the S (stressed) to R (relaxed) conformational transition characteristic of active serpins, it exhibits no serine protease inhibitory activity.
Synonyms:	maspin; PI5
Note:	Immunogen Sequence Homology: Dog: 93%; Rat: 93%; Horse: 93%; Human: 93%; Pig: 86%; Mouse: 86%; Bovine: 86%; Rabbit: 86%; Guinea pig: 86%

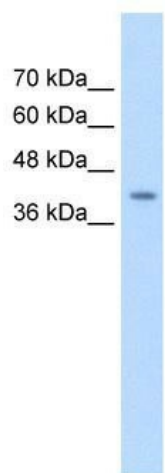


[View online »](#)

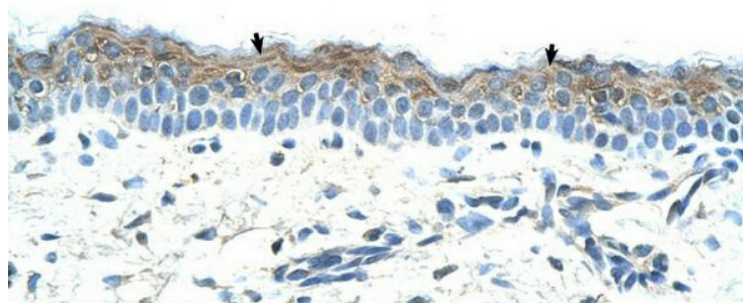
Protein Families: Druggable Genome, Secreted Protein

Protein Pathways: p53 signaling pathway

Product images:



WB Suggested Anti-SERPINB5 Antibody Titration: 0.625 ug/ml; Positive Control: HepG2 cell lysate



Rabbit Anti-SERPINB5 Antibody; Paraffin Embedded Tissue: Human Skin; Cellular Data: Squamous epithelial cells; Antibody Concentration: 4.0-8.0 ug/ml; Magnification: 400X