

Product datasheet for **TA346325**

Neurotensin Receptor 1 (NTSR1) Rabbit Polyclonal Antibody

Product data:

Product Type:	Primary Antibodies
Applications:	WB
Recommended Dilution:	WB
Reactivity:	Human
Host:	Rabbit
Isotype:	IgG
Clonality:	Polyclonal
Immunogen:	The immunogen for anti-NTSR1 antibody: synthetic peptide directed towards the N terminal of human NTSR1. Synthetic peptide located within the following region: FGNASGNASERVLAAPSSELDVNTDIYSKVLVTAVYLALFVVGTVGNTVT
Formulation:	Liquid. Purified antibody supplied in 1x PBS buffer with 0.09% (w/v) sodium azide and 2% sucrose. <i>Note that this product is shipped as lyophilized powder to China customers.</i>
Purification:	Affinity Purified
Conjugation:	Unconjugated
Storage:	Store at -20°C as received.
Stability:	Stable for 12 months from date of receipt.
Predicted Protein Size:	46 kDa
Gene Name:	neurotensin receptor 1 (high affinity)
Database Link:	NP_002522 Entrez Gene 4923 Human P30989
Background:	Neurotensin receptor 1 belongs to the large superfamily of G-protein coupled receptors. NTSR1 mediates the multiple functions of neurotensin, such as hypotension, hyperglycemia, hypothermia, antinociception, and regulation of intestinal motility and secre
Synonyms:	NTR
Note:	Immunogen Sequence Homology: Pig: 100%; Human: 100%; Guinea pig: 100%; Dog: 93%; Bovine: 93%; Rat: 86%; Horse: 86%; Mouse: 86%; Zebrafish: 86%

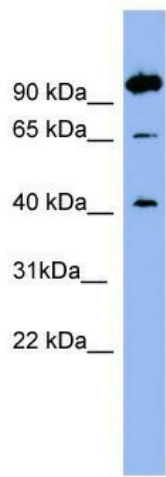


[View online »](#)

Protein Families: Druggable Genome, GPCR, Transmembrane

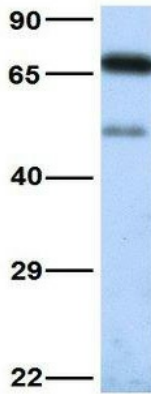
Protein Pathways: Calcium signaling pathway, Neuroactive ligand-receptor interaction

Product images:



WB Suggested Anti-NTSR1 Antibody Titration: 0.2-1 ug/ml; ELISA Titer: 1: 312500; Positive Control: OVCAR-3 cell lysate

NTSR1



Rabbit Anti-NTSR1
Sample Type: Human Fetal Heart
Antibody Concentration: 1ug/mL

Host: Rabbit; Target Name: NTSR1; Sample Tissue: Human Fetal Heart; Antibody Dilution: 1.0 ug/ml