

Product datasheet for **TA346324**

MMP3 Rabbit Polyclonal Antibody

Product data:

Product Type:	Primary Antibodies
Applications:	IHC, WB
Recommended Dilution:	WB, IHC
Reactivity:	Human
Host:	Rabbit
Isotype:	IgG
Clonality:	Polyclonal
Immunogen:	The immunogen for anti-MMP3 antibody: synthetic peptide directed towards the middle region of human MMP3. Synthetic peptide located within the following region: AEDFPGIDSKIDAVFEEFGFFYFFTGSSQLEFDPNAKKVTHTLKSNSWLN
Formulation:	Liquid. Purified antibody supplied in 1x PBS buffer with 0.09% (w/v) sodium azide and 2% sucrose. <i>Note that this product is shipped as lyophilized powder to China customers.</i>
Purification:	Affinity Purified
Conjugation:	Unconjugated
Storage:	Store at -20°C as received.
Stability:	Stable for 12 months from date of receipt.
Predicted Protein Size:	43 kDa
Gene Name:	matrix metalloproteinase 3
Database Link:	NP_002413 Entrez Gene 4314 Human P08254



[View online »](#)

Background:

MMP3 can degrade fibronectin, laminin, gelatins of type I, III, IV, and V; collagens III, IV, X, and IX, and cartilage proteoglycans. MMP3 activates procollagenase. Proteins of the matrix metalloproteinase (MMP) family are involved in the breakdown of extracellular matrix in normal physiological processes, such as embryonic development, reproduction, and tissue remodeling, as well as in disease processes, such as arthritis and metastasis. Most MMP's are secreted as inactive proproteins which are activated when cleaved by extracellular proteinases. This gene encodes an enzyme which degrades fibronectin, laminin, collagens III, IV, IX, and X, and cartilage proteoglycans. The enzyme is thought to be involved in wound repair, progression of atherosclerosis, and tumor initiation. The gene is part of a cluster of MMP genes which localize to chromosome 11q22.3. Publication Note: This RefSeq record includes a subset of the publications that are available for this gene. Please see the Entrez Gene record to access additional publications.

Synonyms:

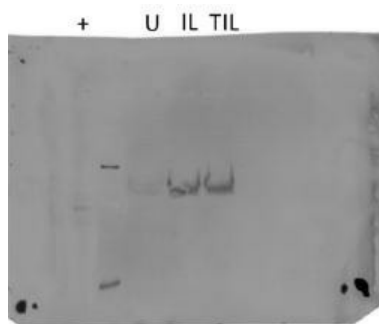
CHDS6; MMP-3; SL-1; STMY; STMY1; STR1

Note:

Immunogen Sequence Homology: Dog: 100%; Human: 100%; Mouse: 100%; Pig: 93%; Rat: 93%; Horse: 93%; Bovine: 93%; Rabbit: 93%

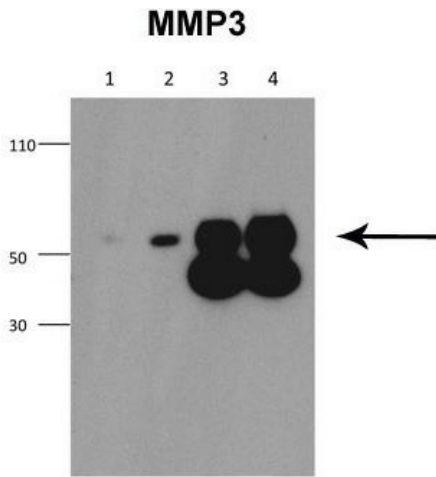
Protein Families:

Druggable Genome, Protease

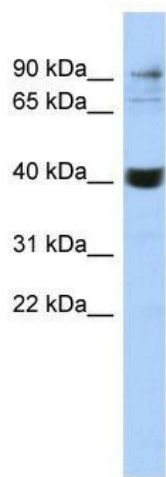
Product images:**Legend**

+ = Positive control (crushed IL-1 β treated equine cartilage explants).
U = Untreated equine cartilage
IL = IL-1 β treated equine cartilage
TIL = TNF- α and IL-1 β treated equine cartilage

Sample Type: Equine Cartilage Explants; Primary Dilution: 1: 1000; Secondary: Abcam ab97200 (Dilution: 1: 20, 000)

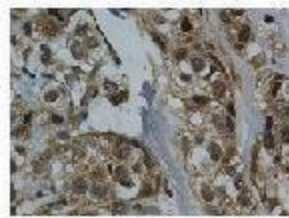
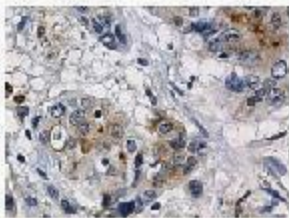


MMP3 antibody - middle region validated by WB using Equine Cartilage Explants at 1: 1000.



WB Suggested Anti-MMP3 Antibody Titration: 0.2-1 ug/ml; ELISA Titer: 1: 1562500; Positive Control: Jurkat cell lysate

MMP-3



Sample: Human colorectal cancer

Control: Human Small Intestine

Brown: Primary antibody
Blue: DAPI

Application: IHC; Species+tissue/cell type: Control-Human small intestine, Sample-human colorectal cancer; Primary antibody dilution: 1: 100; Secondary antibody: Biotinylated pig anti-rabbit+streptavidin-HRP